



Gwich'in Harvest Data Collection Project: Update & Recommendations

PCMB Annual Harvest Meeting, Dawson
February 8, 2016

Presented by
Janet Boxwell, Renewable Resources Manager
Gwich'in Renewable Resources Board

Presentation Outline


- ▶ Goal
- ▶ GRRB role
- ▶ GRRB harvest project
 - Methods
 - Results
- ▶ GRRB recommendation
- ▶ Comments



Credit: J Boxwell, 2012

GOAL: Gwich'in Harvest Data Collection

to obtain the best information we can in order
to make effective wildlife management
decisions for sustainability



GRRB role with Porcupine caribou data

GRRB is not a party to the PCMA or HMP but
have an implementation role to collect and report
on Gwich'in harvest data

GRRB Gwich'in Harvest Data Project

Methods

Results (2014-2015)

Interim Results (Collected Nov 2015)



Method: Community interviews

GRRB	RRC	Interviewer
Applies for funding	Hires community Interviewer	Conducts surveys with harvesters (3 communities)
Data entry	Door prizes	
Financial reporting	Returns survey forms to GRRB	
Reports any PC harvest to PCMB		
Data management	*Note: RRCs use slightly different collection methods but give same objective and fall within the strategic framework (cleared by PCMB)	

Method: Statistical analysis

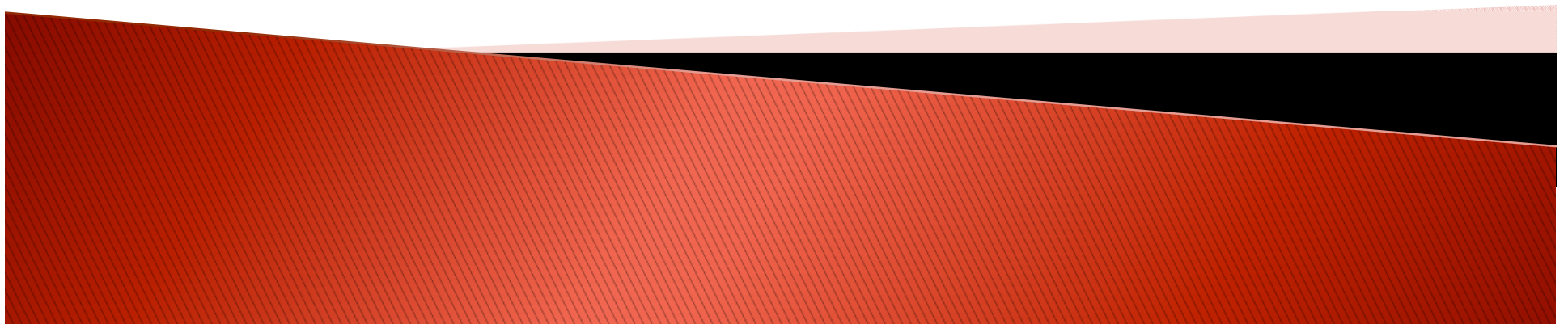
PCMB Framework followed:

- ▶ 3 pieces of info needed for harvest estimate
 - No. of active and key harvesters (harvester list)
 - No. who participated in survey
 - No. of animals reported harvested
- ▶ Stats can be calculated for any species of interest
- ▶ Data concerning Porcupine caribou harvest provided to PCMB



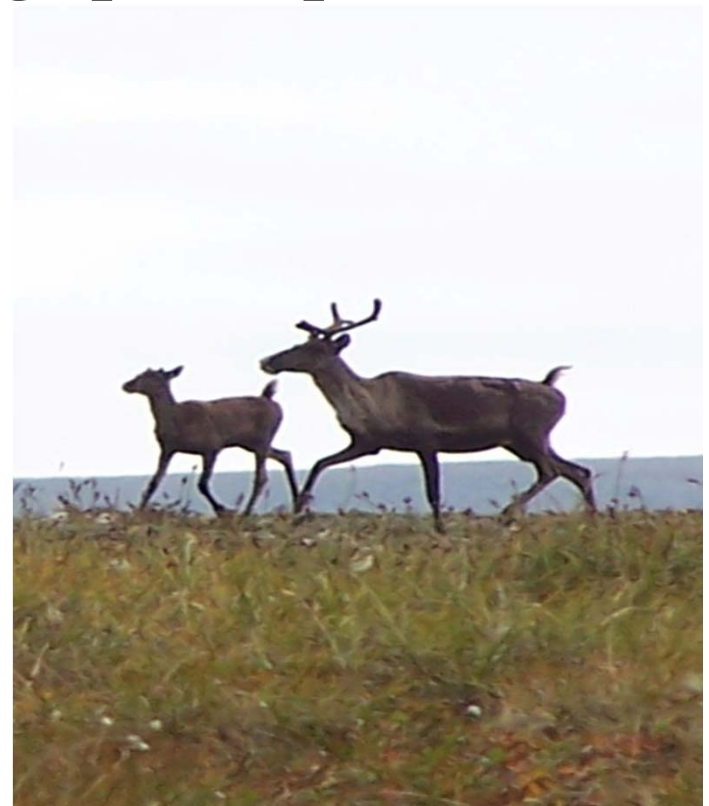
Credit: ENR

Jun 01 2014–May 31 2015
RESULTS



Harvester participation: June 01, 2014-May 31, 2015

- ▶ **Potential: 541 responses/year**
 - 245 active ungulate harvesters X multiple survey rounds
- ▶ **Actual: 223 surveys = 41% average participation rate**
 - Aklavik 22% participation
 - Fort McPherson 65%
 - Inuvik 16%
 - Tsiigehtchic 23%
- ▶ **We need to work together to improve reporting!**



Reported ungulate harvest: June 01, 2014-May 31, 2015

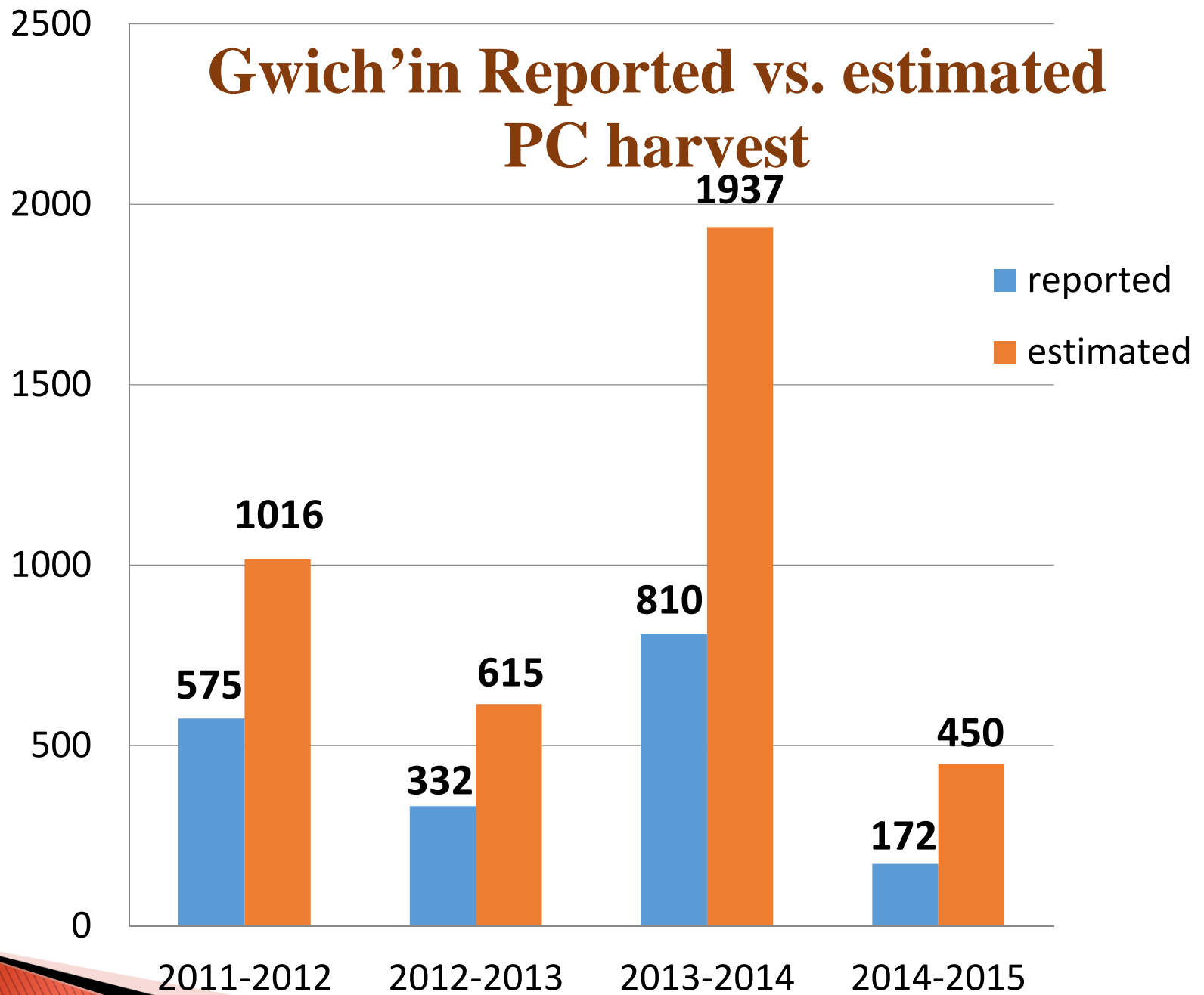
- ▶ **Total caribou: 183**
 - **Porcupine caribou 172**
 - **107 Male + 65 Female**
 - **Woodland 9M + 2F**

Other ungulates:

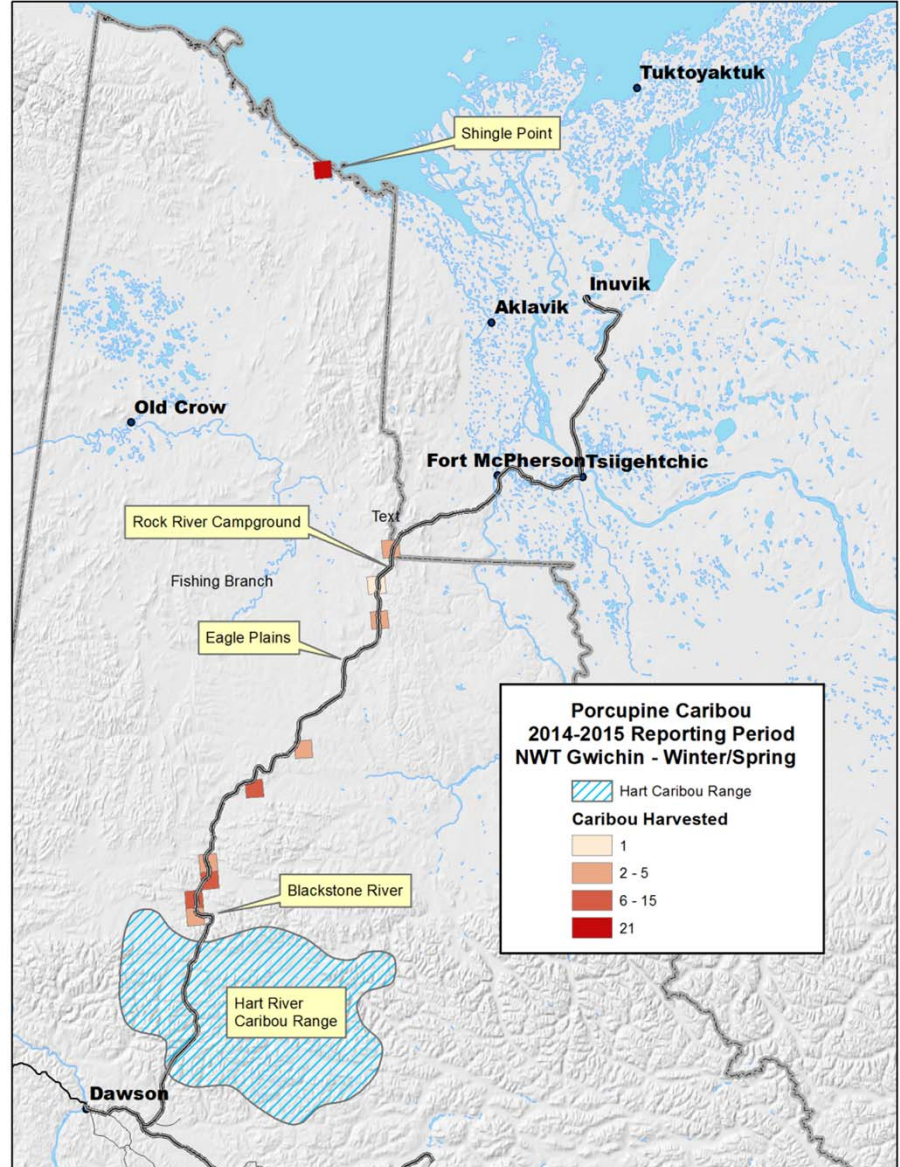
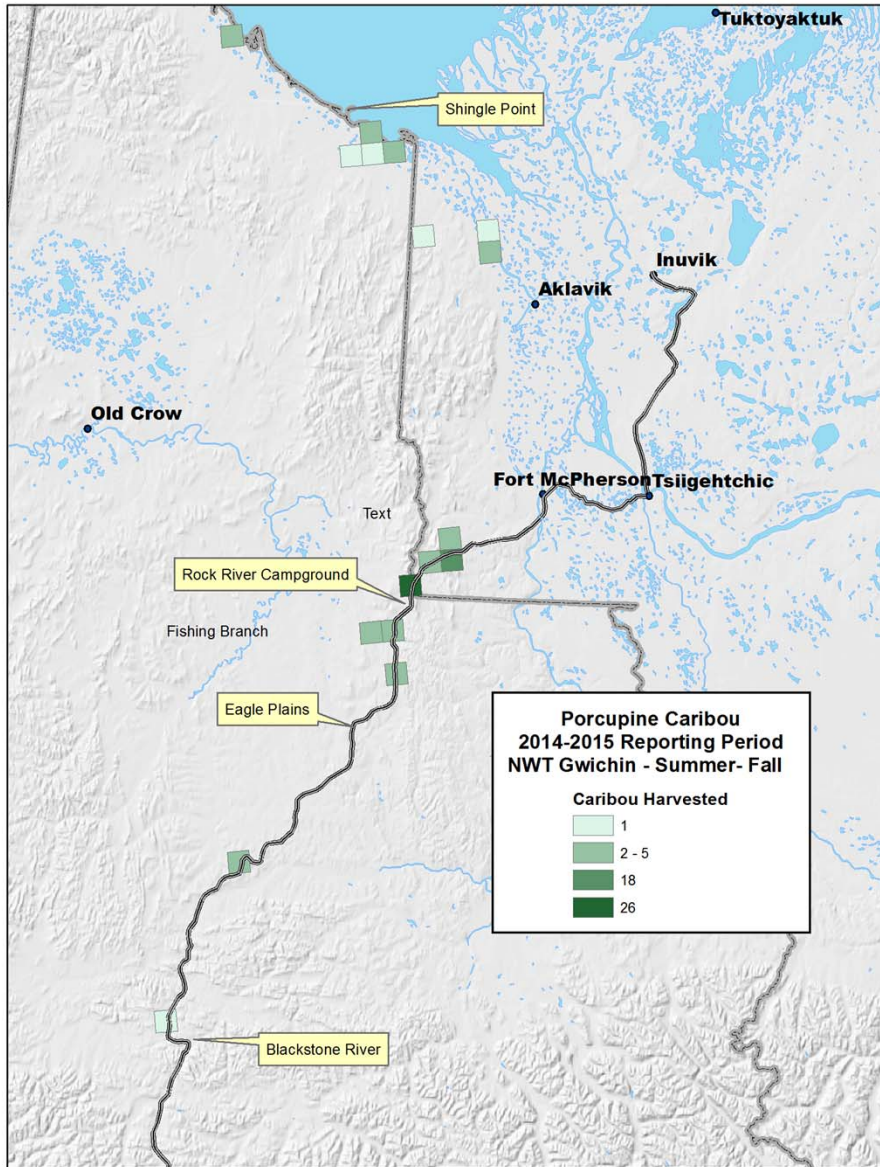
- ▶ **Moose 5M + 6F**
- ▶ **Dall's sheep 0 reported**
- ▶ **Muskox 4M**



Gwich'in Reported vs. estimated PC harvest



Reported PC Harvest Locations 2014-2015



Harvester Observations

Jun 01,2014 –May 31, 2015

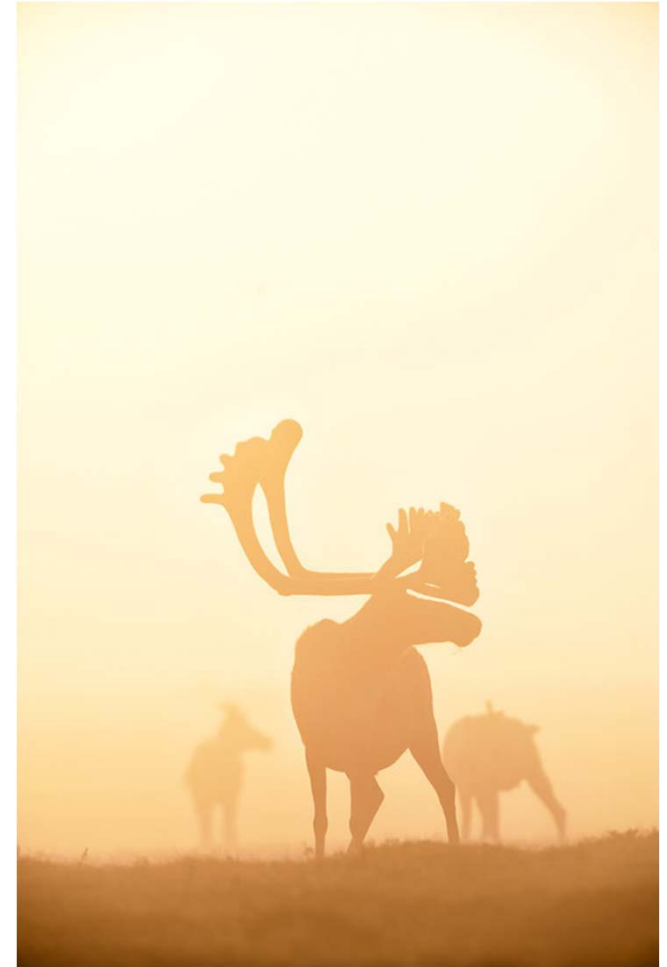
- ▶ Bull-dominated harvest
- ▶ Didn't participate b/c no caribou
- ▶ Did not meet needs, no caribou
- ▶ Predator abundance
 - Same-less wolves, wolverine
 - Same-more bears
- ▶ Didn't know Dalls sheep had decreased by 30% between 2010- 2014, hadn't heard about voluntary harvest closure
- ▶ Saw Bank Swallows
 - Mackenzie betw 6 mile-ferry
 - Peel at 8-Mile
 - Old Fort area
- ▶ More bank erosion, sand bars, river low
- ▶ Lots of rain Summer 2014
- ▶ Lots of snow Jan-Apr 2015



Interim PC Results

Jun 01 – Oct 31, 2015

- ▶ Porcupine caribou reported harvested: **424**
 - 213 M + 211 F
- ▶ Participation decreased
- ▶ Results:
 - 7 Aklavik harvesters reported
 - 13 M
 - 58 Fort McPherson
 - 175 M + 159F
 - 13 Inuvik
 - 25M+52F
 - XX Tsiigehtchic (in progress)



Credit: Peter Mather

Your participation is important!

- ▶ Data used by decision-makers at all levels
- ▶ Better decisions!



Next Steps

- ▶ Continue to work with RRCs
 - Promote participation
 - What works for each RRC
- ▶ Use database created in 2014 to make data entry consistent and accessible
- ▶ Continue to use best practices for data collection for most accurate results



Credit: GRRB, J. Boxwell

GRRB Recommendation

- ▶ Maintain Green Zone designation
- ▶ Continue to promote bull-dominated harvests



Credit: J. Carnogursky, 2012

Update: Harvester Education

- ▶ Caribou harvester education workshop Feb 15-18, 2016
 - Tetlit RRC initiative
 - Presenters and display booths
 - GRRB will promote harvest survey
 - Could become a template for workshops in other communities





Haii Cho!

Janet Boxwell

Renewable Resources Manager

**Gwich'in Renewable
Resources Board**

(867) 777-6615

jboxwell@grrb.nt.ca

facebook.com/grrb.nt.ca

Credit: GRRB, J. Boxwell