



# Gwich'in Harvest Data Collection Study Update

PCMB Annual Harvest Meeting, Inuvik  
February 14, 2017

*Presented by*  
Janet Boxwell, Renewable Resources Manager

# Presentation Outline

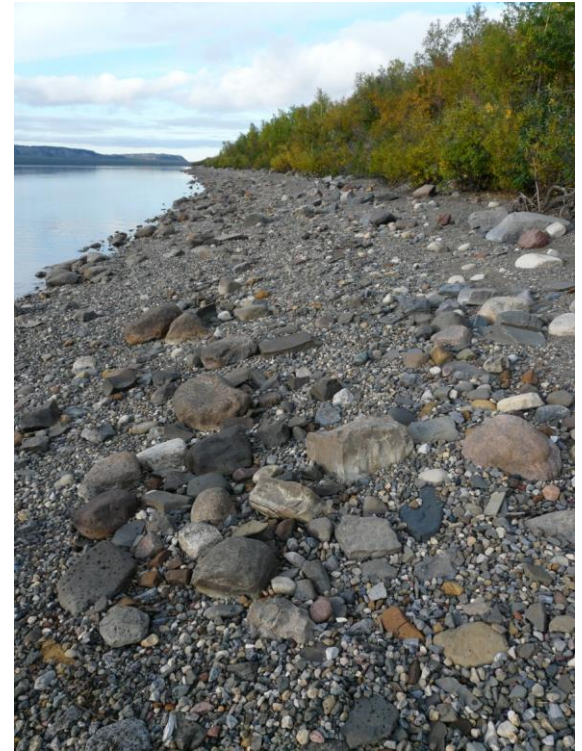
## ▶ **Gwich'in Harvest Data Collection**

- Why important
- GRRB/RRC roles
- 2015-2016 results

## ▶ **Discussion**

- RRC ideas for increasing harvester participation

## ▶ **GRRB recommendations**



Credit: J Boxwell, 2014

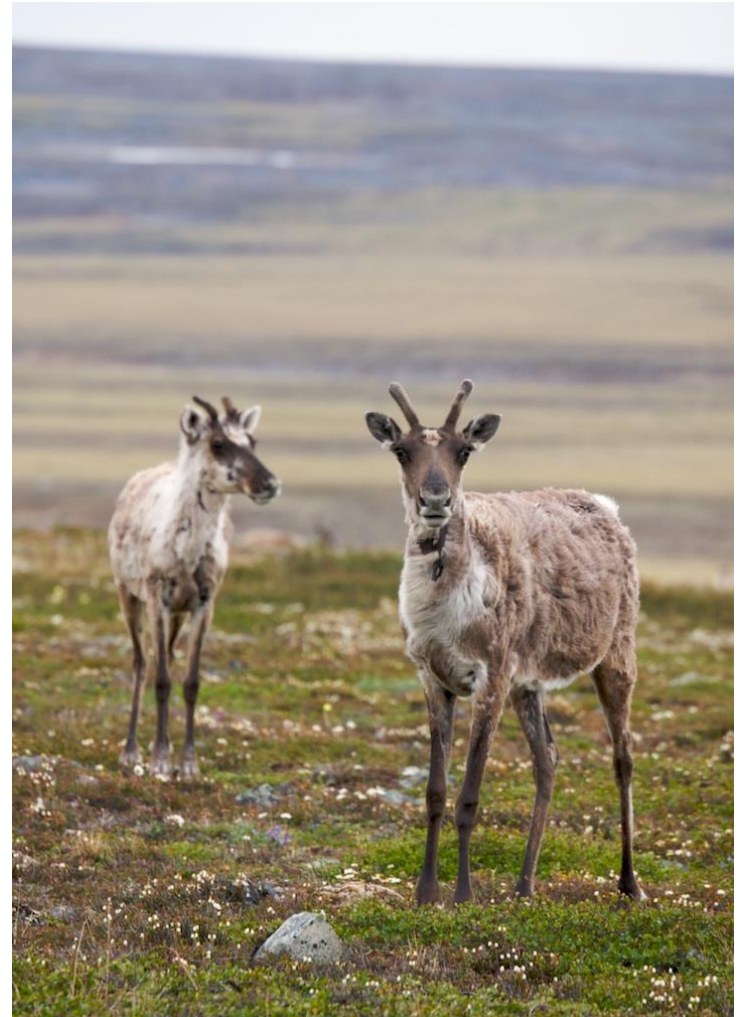
# GOAL: Gwich'in Harvest Data Collection

to obtain the best information we can in order  
to make effective wildlife management  
decisions for sustainability

# Harvest reporting is important!

## ► Why?

- To provide more accurate picture of Gwich'in use of resource
- Protect harvest rights
- Provides information for management decisions
- To support Traditional Knowledge
- To better understand health of populations



Credit: unknown, ENR

# GRRB/RRC roles

# GRRB Role



Credit: unknown

- ▶ S 12.8.38 – ‘ The Board may participate in harvesting studies, in data collection and evaluation of wildlife research’
- ▶ S12.8.40 - ... ‘harvest studies ... shall directly involve the RRCs’

# RRC Role

- ▶ S12.9.1 – The RRC in each community shall ‘encourage and promote local involvement in conservation, harvest studies, research and wildlife management’
- ▶ S12.9.6- ‘RRCs shall participate in the collection and provision of local harvest data...’



Credit: Peter Mather, 2013

# Statistical analysis

- ▶ 3 pieces of info needed for estimate
  - # of active and key harvesters
  - # who participated in survey
  - # of animals harvested
- ▶ Harvest data for caribou, moose, Dall's sheep, muskox
- ▶ Data concerning Porcupine caribou harvest provided to PCMB



Credit: Unknown

Jun 01 2015–May 31 2016  
RESULTS

# Reported Porcupine Caribou harvest: June 01, 2015–May 31, 2016

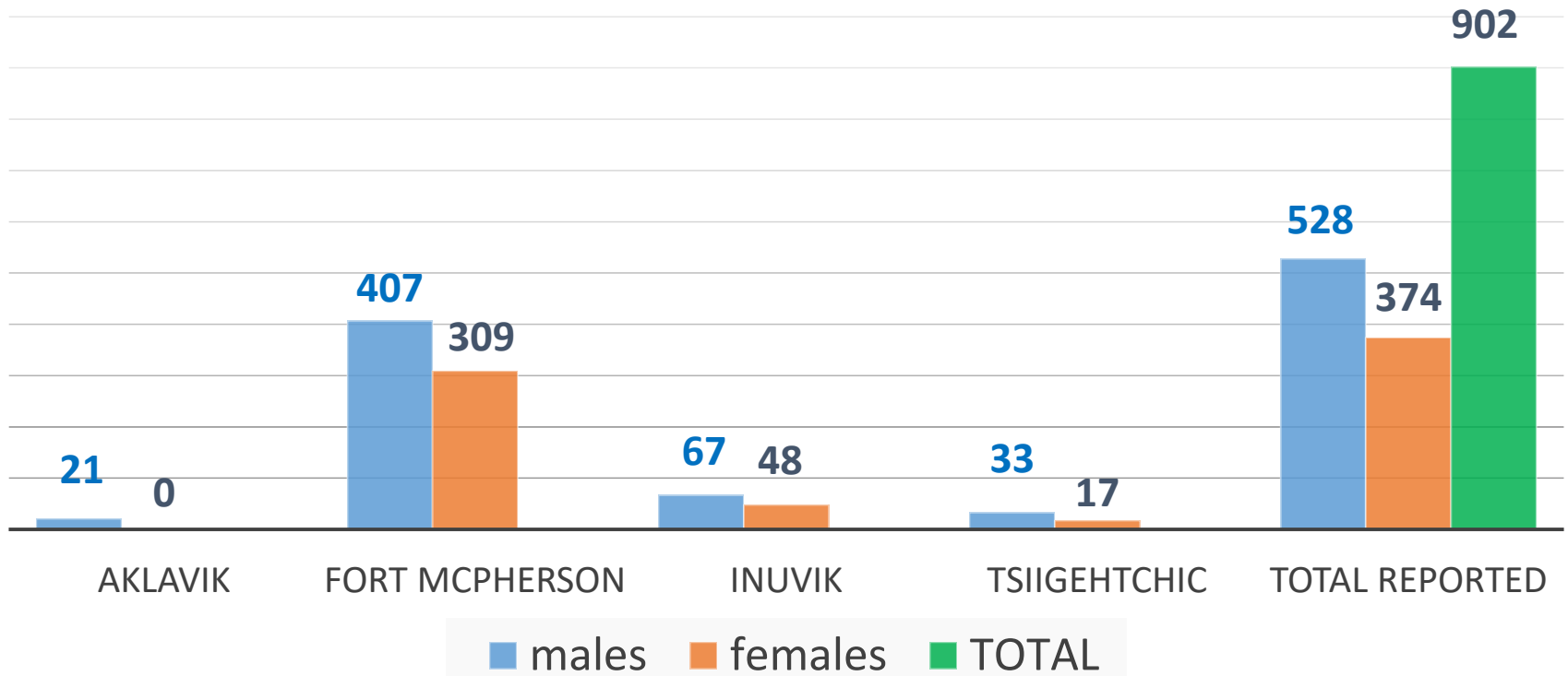
## ▶ Caribou:

- Porcupine caribou
  - 528 Male + 374 Female
  - 902 Total



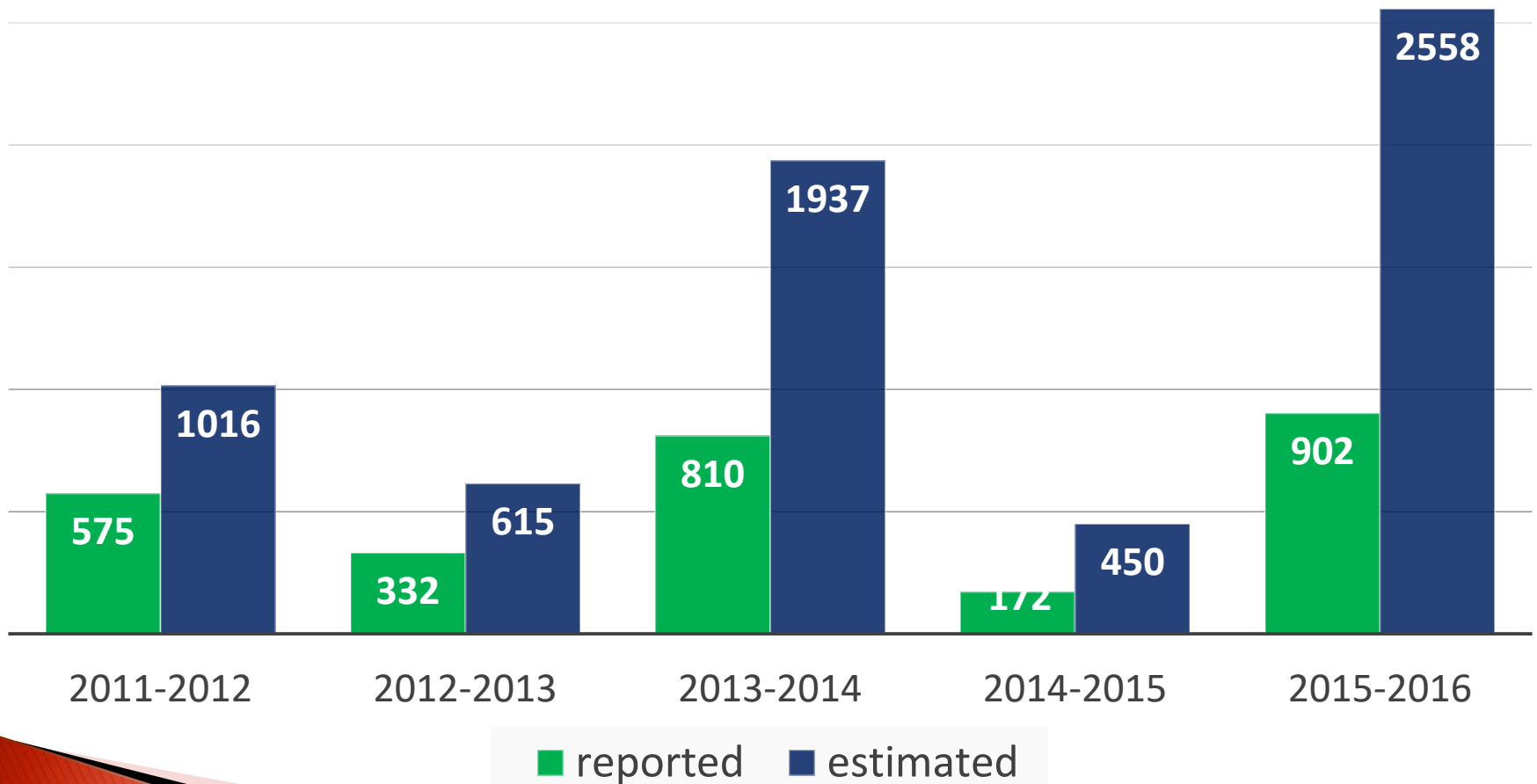
Credit: unknown

# reported PC harvest by community, 2015-2016



- Reported harvest
- Communities have different numbers of harvesters
- Communities have different harvester participation rates

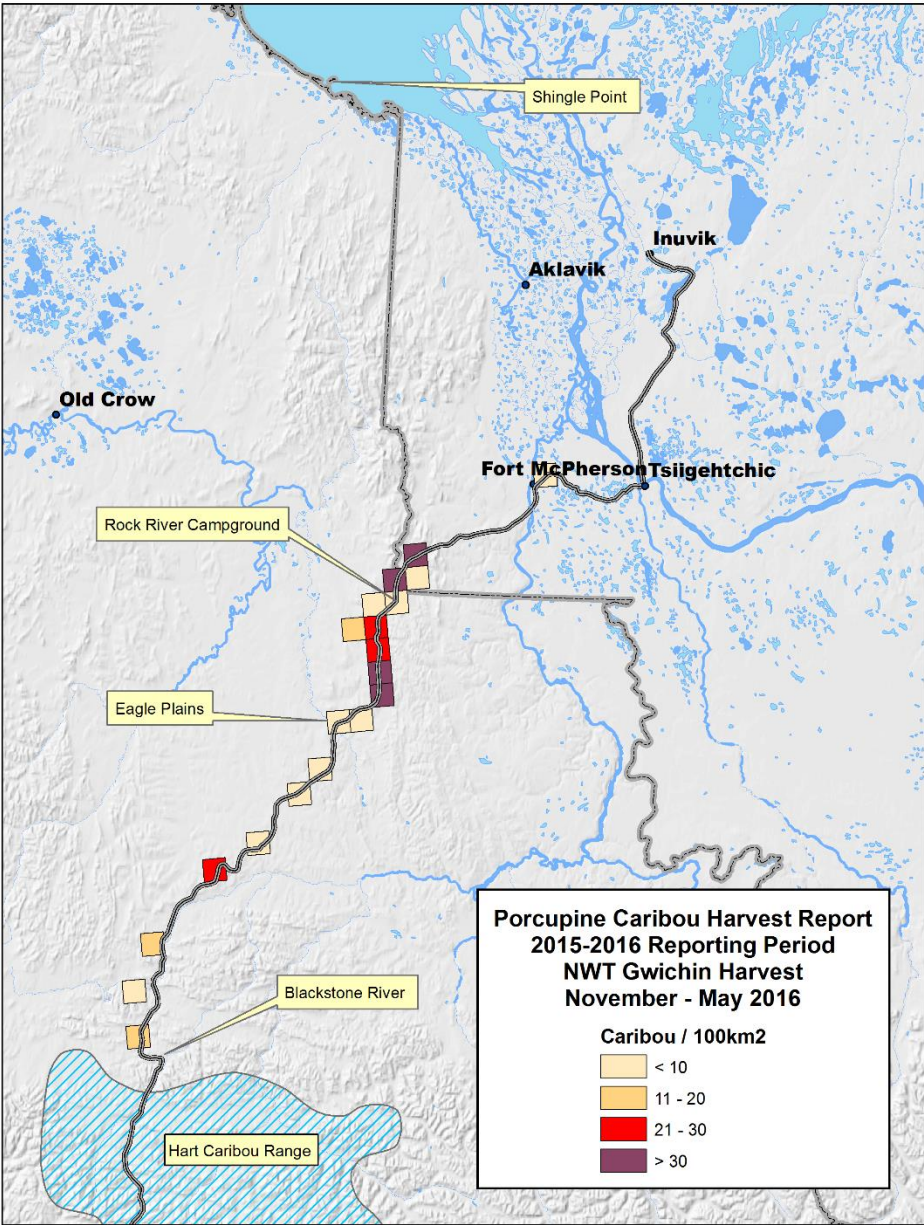
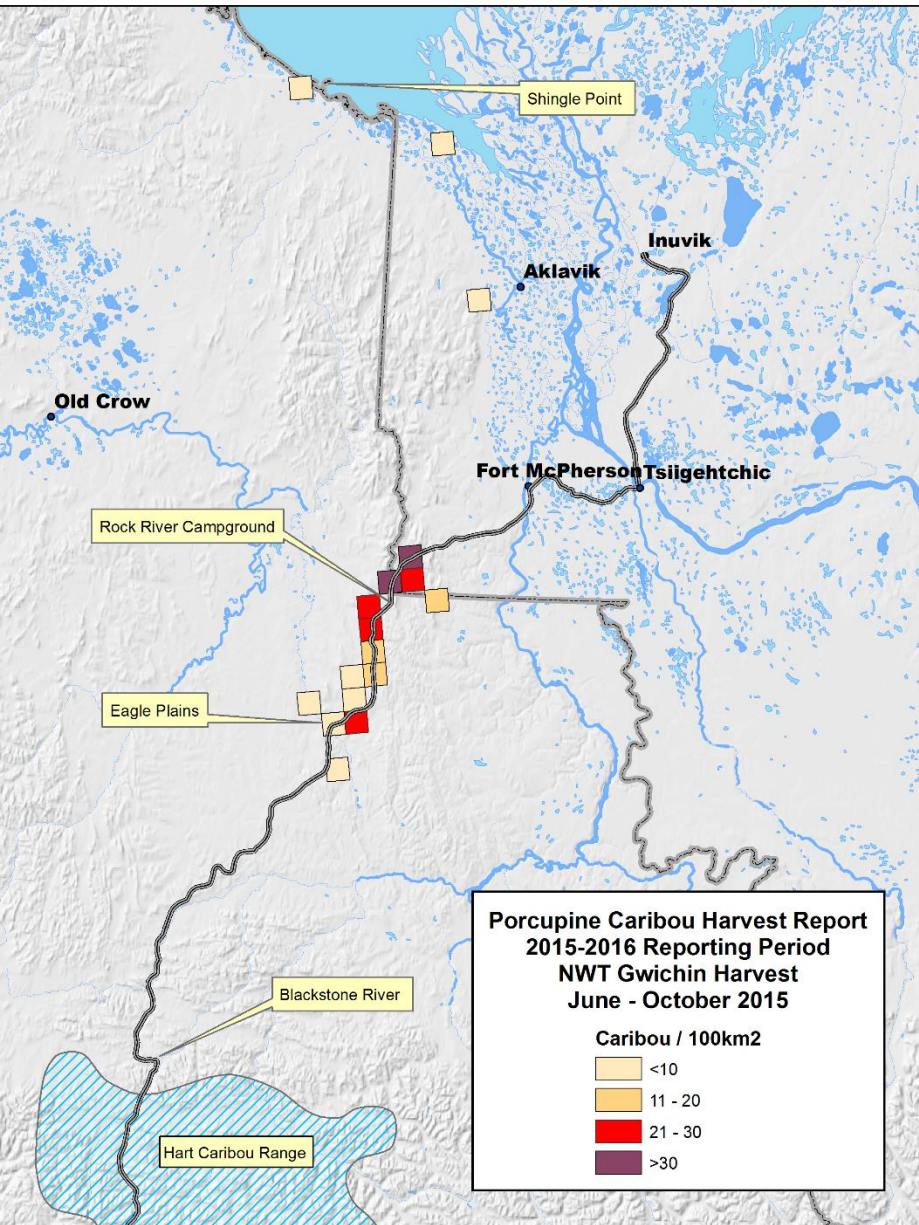
# reported vs. estimated PC harvest by year



# Harvester participation: June 01, 2015–May 31, 2016

- ▶ **Potential: 100% (550 responses/year)**
  - 275 active ungulate harvesters X two survey rounds = 550
- ▶ **Actual: 32% overall participation rate**
- ▶ **Participation by community**
  - 23% Aklavik
  - 44% Fort McPherson
  - 21% Inuvik
  - 21% Tsiigehtchic



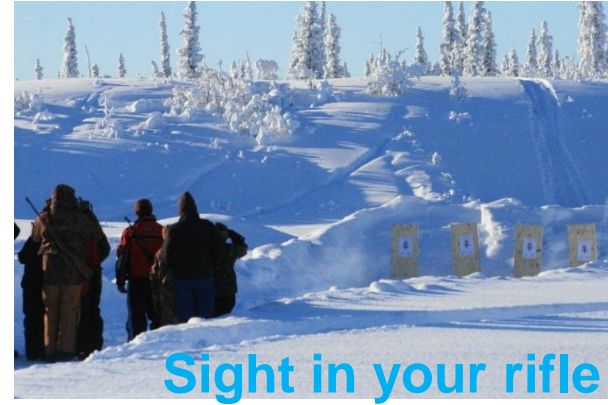


Harvest locations

# Harvester comments



**ERRC comment – need monitoring where caribou are!  
Ex. on river at Aklavik**



**Use right bullet to kill animal.  
Need harvester ed programs for whole community.**



**Seismic lines**

**are used by caribou and predators. Some concerns about easier access for harvesters.**

Credit: Eamon MacMahon, 2012



# Interim results: Jun 01–Oct 31, 2016

- ▶ 10 Porcupine caribou (male) reported
  - Fall 2016
  - Approx 110 surveys returned
- ▶ No caribou around
- ▶ ERRC interested in caribou monitoring and checkstation in their community when caribou in their area.



# GRRB Recommendations to PCMB and Parties

- ▶ Maintain Green Zone designation
- ▶ Continue to promote bull-dominated harvest
- ▶ Continue to promote harvester and community conservation and education initiatives



# Haii Cho!

**Gwich'in Renewable  
Resources Board**

PO Box 2240

Inuvik, NT

X0E 0T0

[facebook.com/grrb.nt.ca](https://www.facebook.com/grrb.nt.ca)

**Janet Boxwell**

*Renewable Resources Manager*

(867) 777-6600 ext 5

[jboxwell@grrb.nt.ca](mailto:jboxwell@grrb.nt.ca)