

2017-18 ABEKS Update

Presented to:

PCMB Annual Harvest Meeting

Dawson City

February 13, 2018

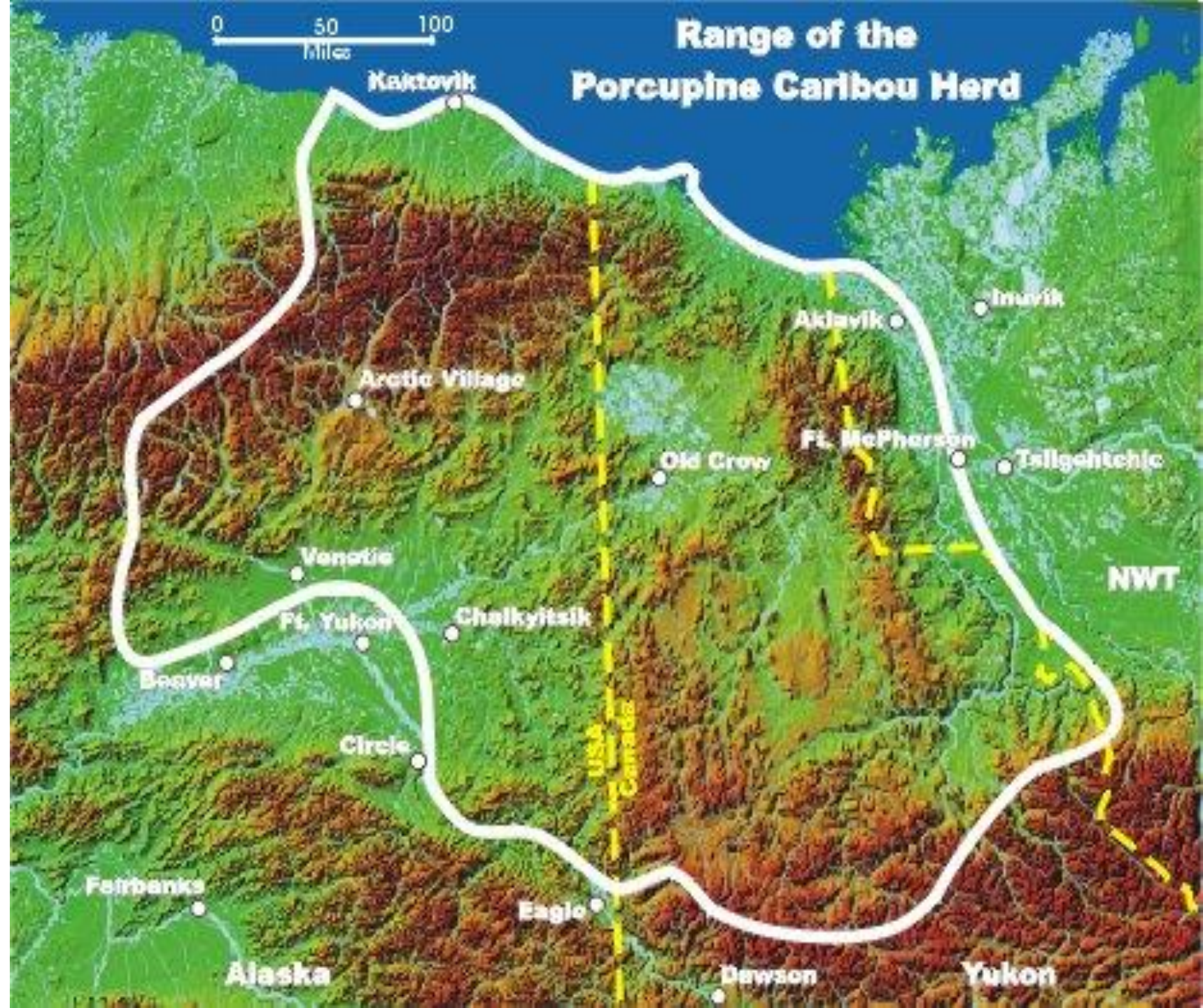


ABEKS 2017

169 interviews with local experts

Arctic Village, Old Crow, Tsiigehtchic, Fort McPherson, Inuvik, Aklavik, Tuktoyaktuk

2017 Season = November 2016-October 2017

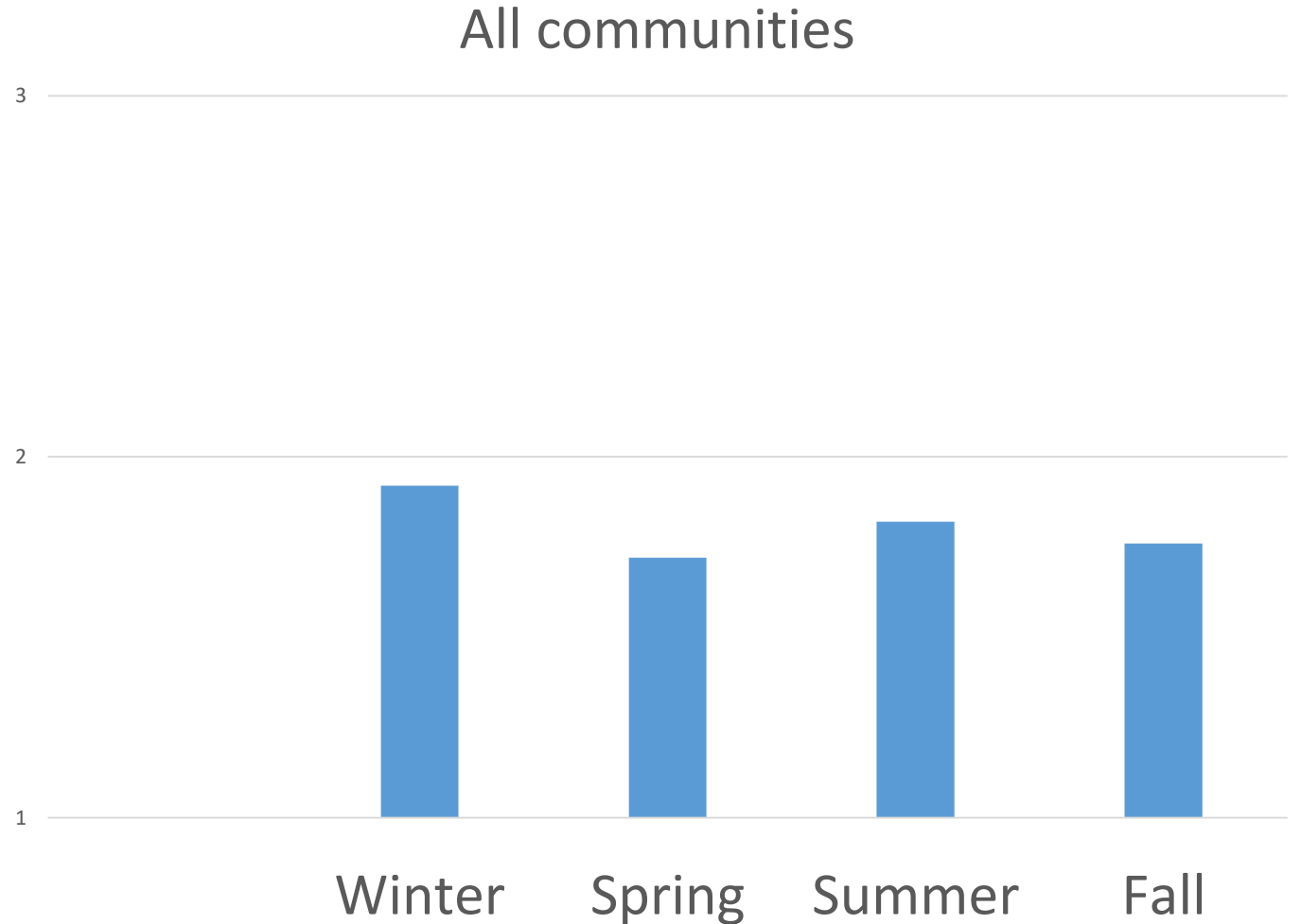


Indicators

- Adult female and calf abundance
- Overall caribou abundance
- Meeting caribou needs
- Reasons for not meeting needs
- Caribou body condition
- Abnormalities reported
- Extreme & rare weather events

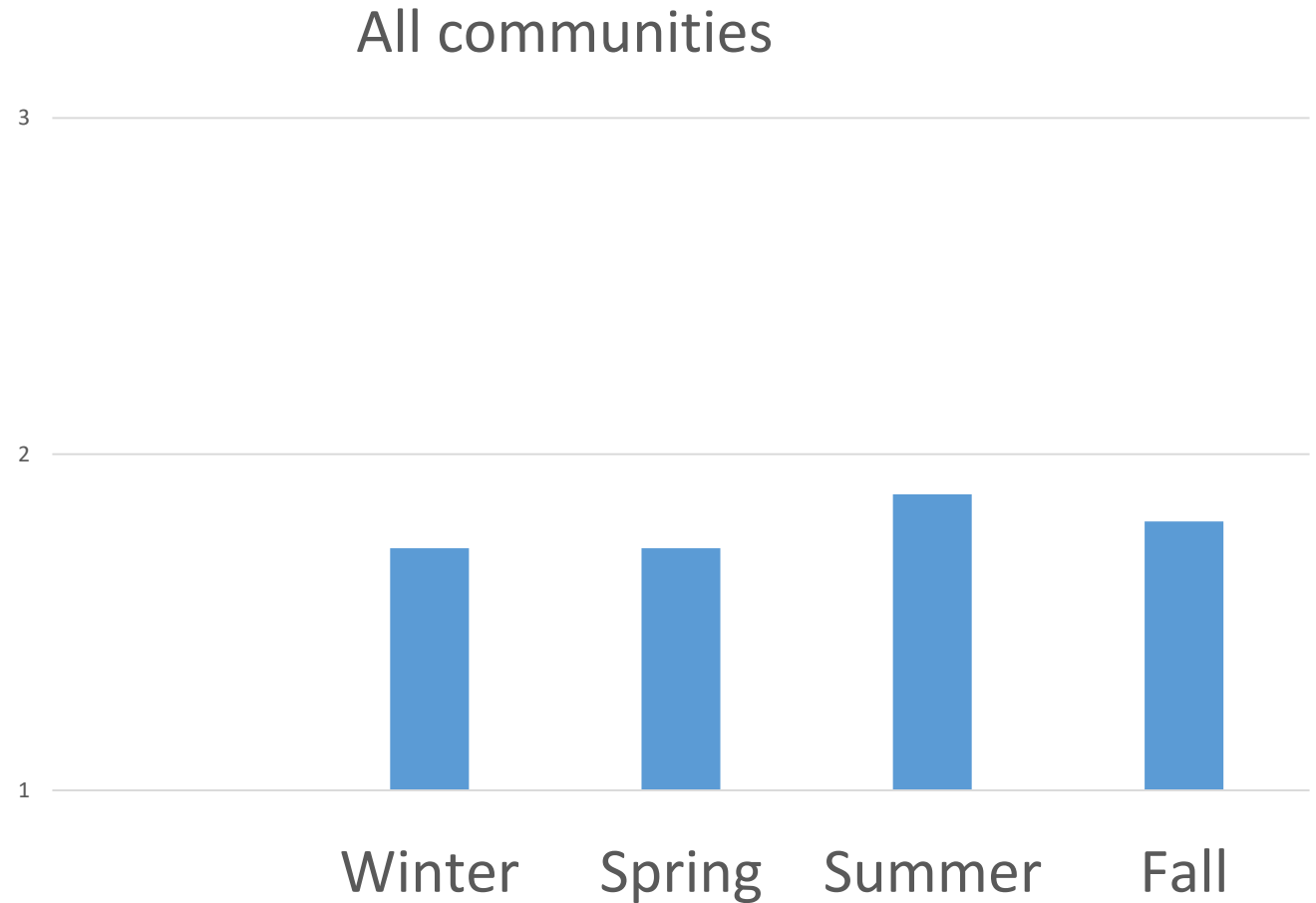
Adult female abundance

- “In your observations for each season, were there more, equal or fewer adult female caribou over the last year than usual”?
- Average # respondents = 67 (varied by season)



Calf abundance

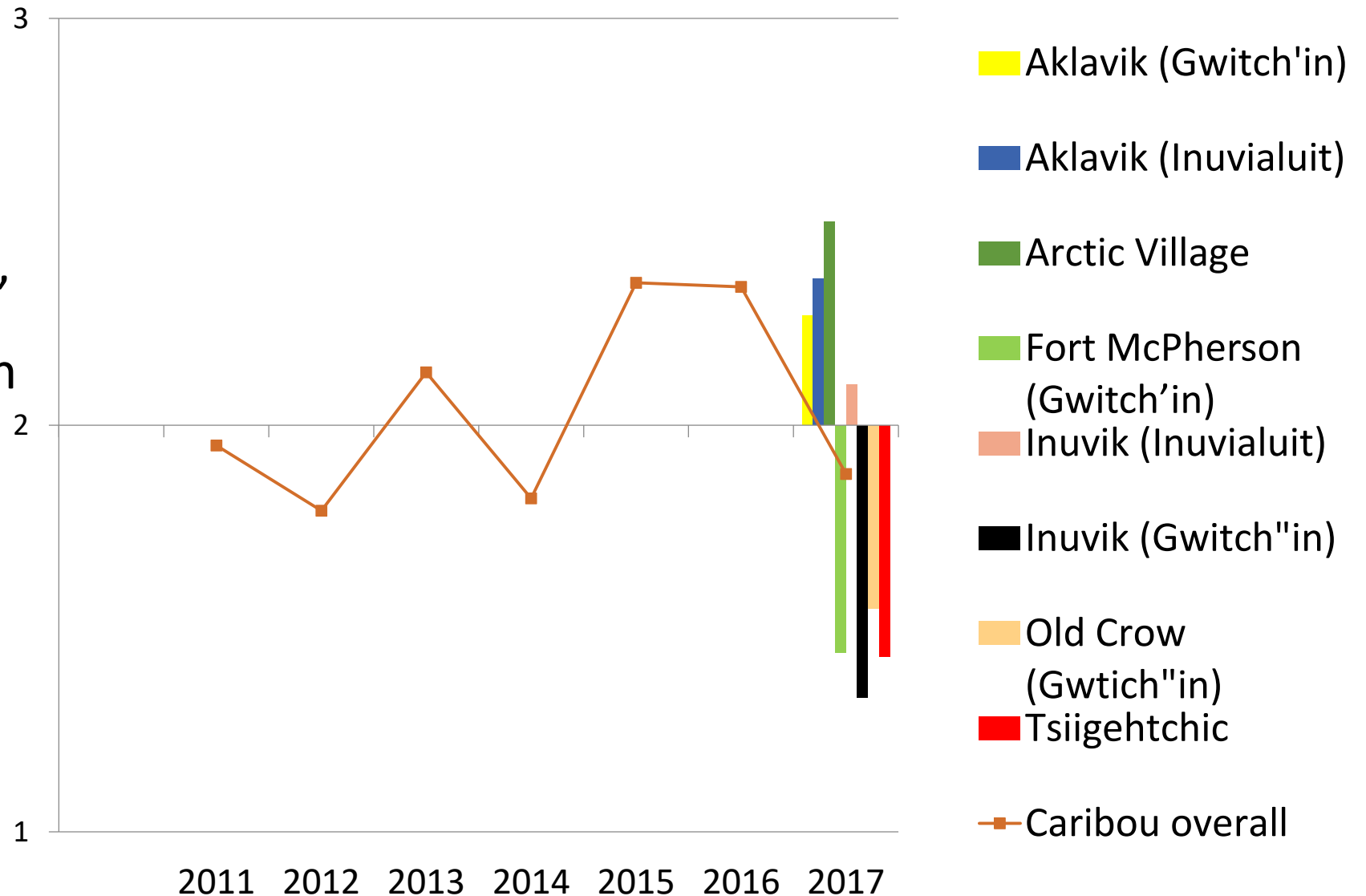
- “In your observations for each season, were there more, equal or fewer [calf] caribou over the last year than usual”?
- Average # respondents = 60



Overall abundance

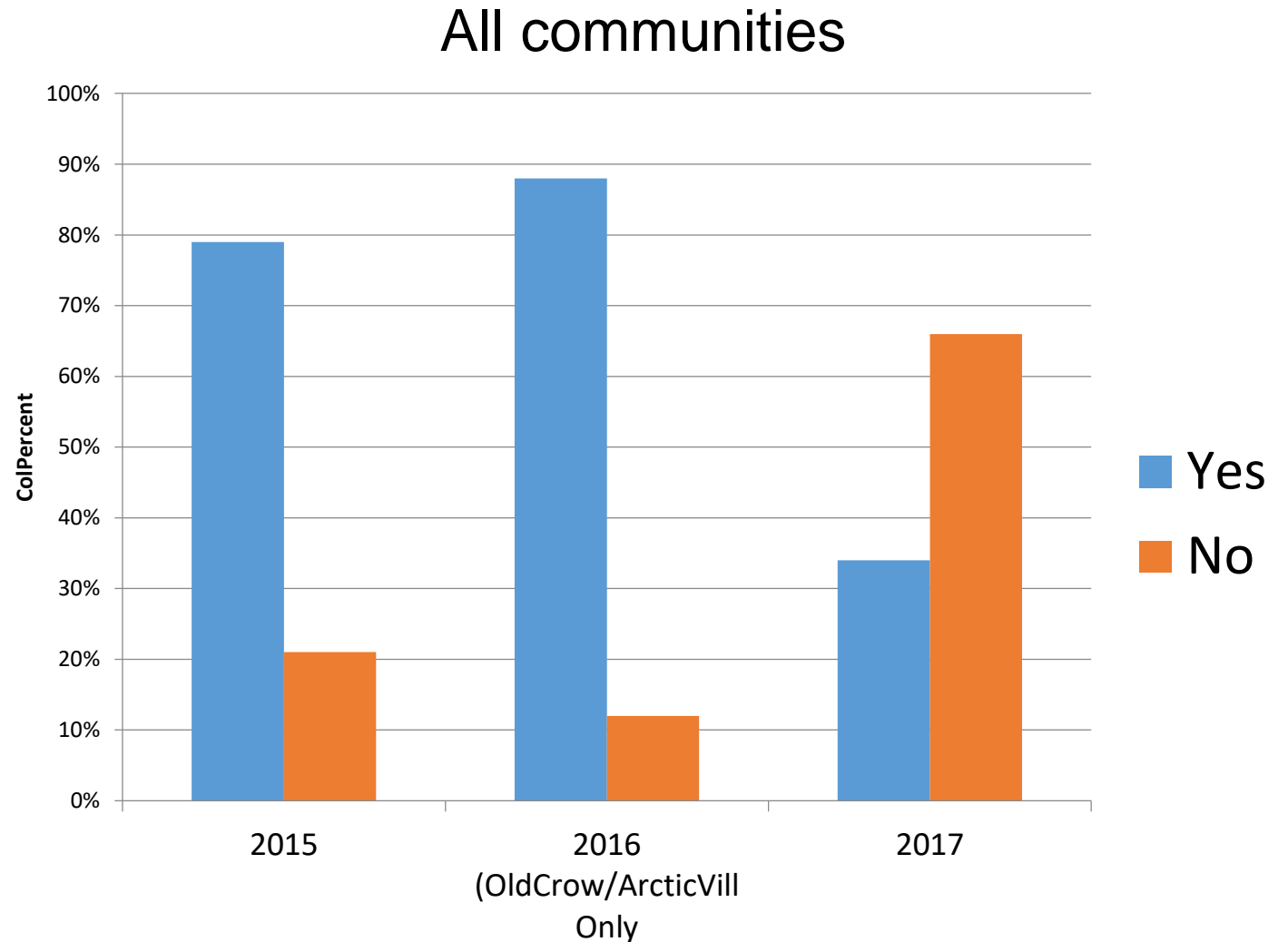
- “In your observations, would you say there were more, the same, or fewer [caribou] in your area in the past year than usual?”

- 119 people responded

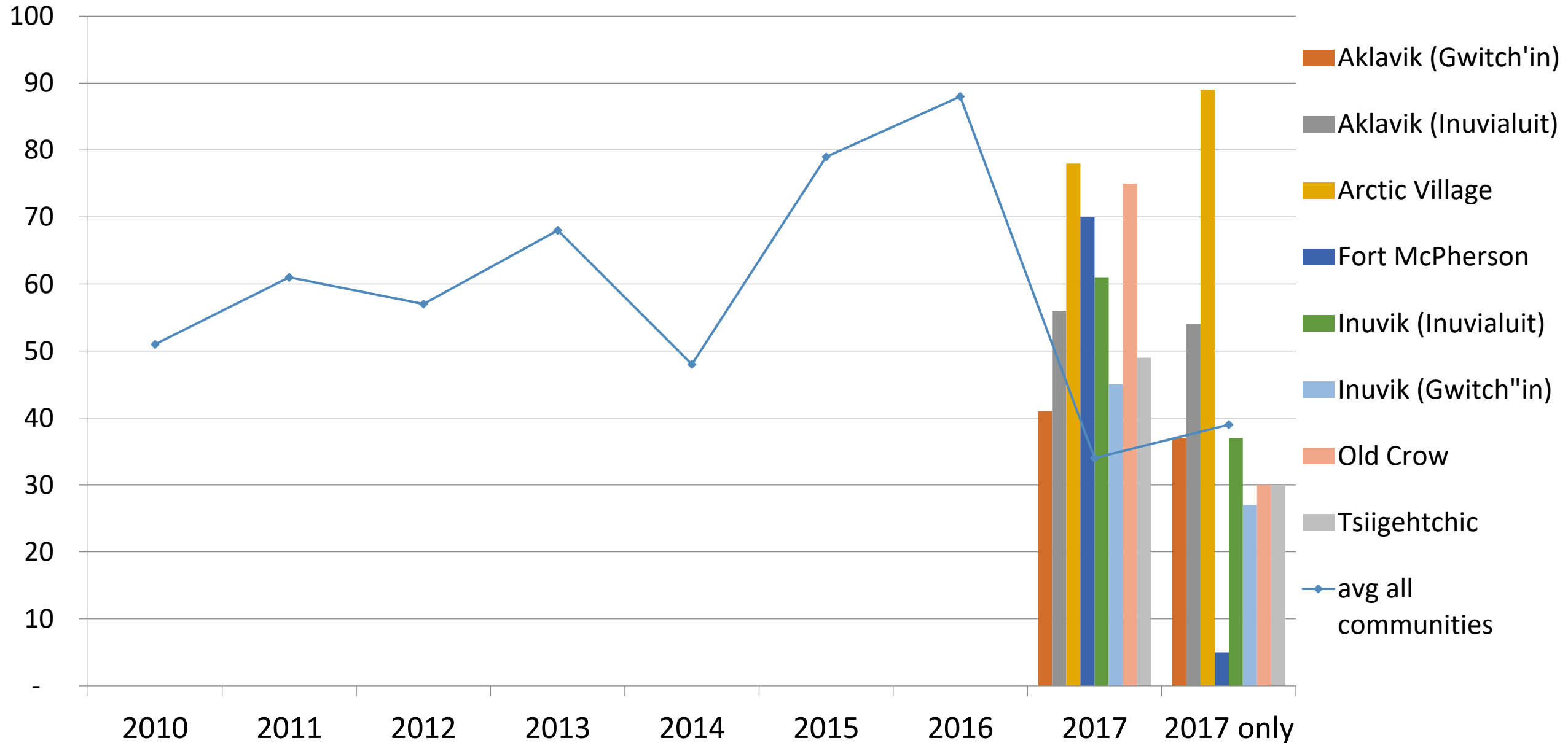


Meeting caribou needs

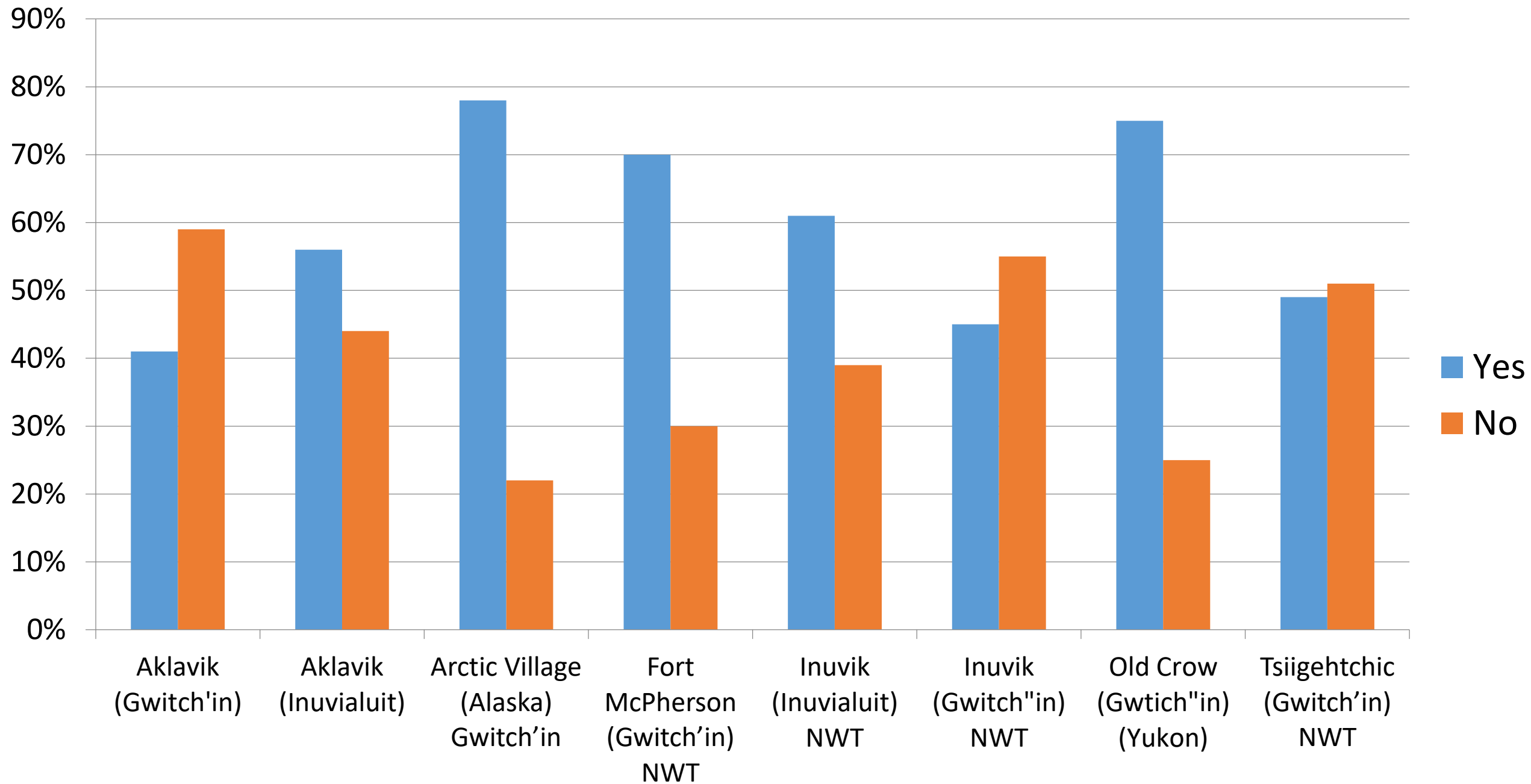
- “Were your needs met for caribou this year?”
- 135 responded
- 2016 = Old Crow & Arctic Village only



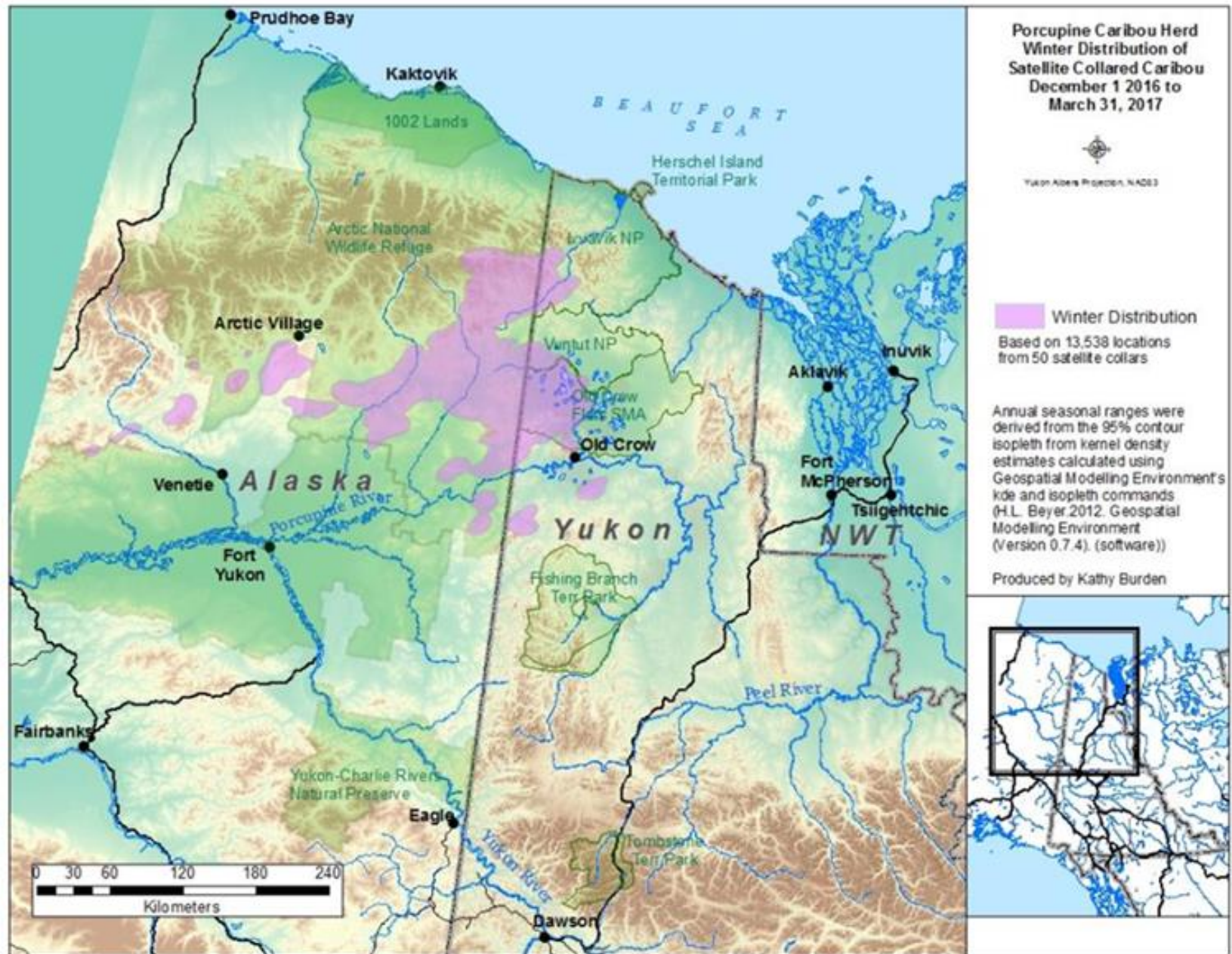
Meeting needs by community



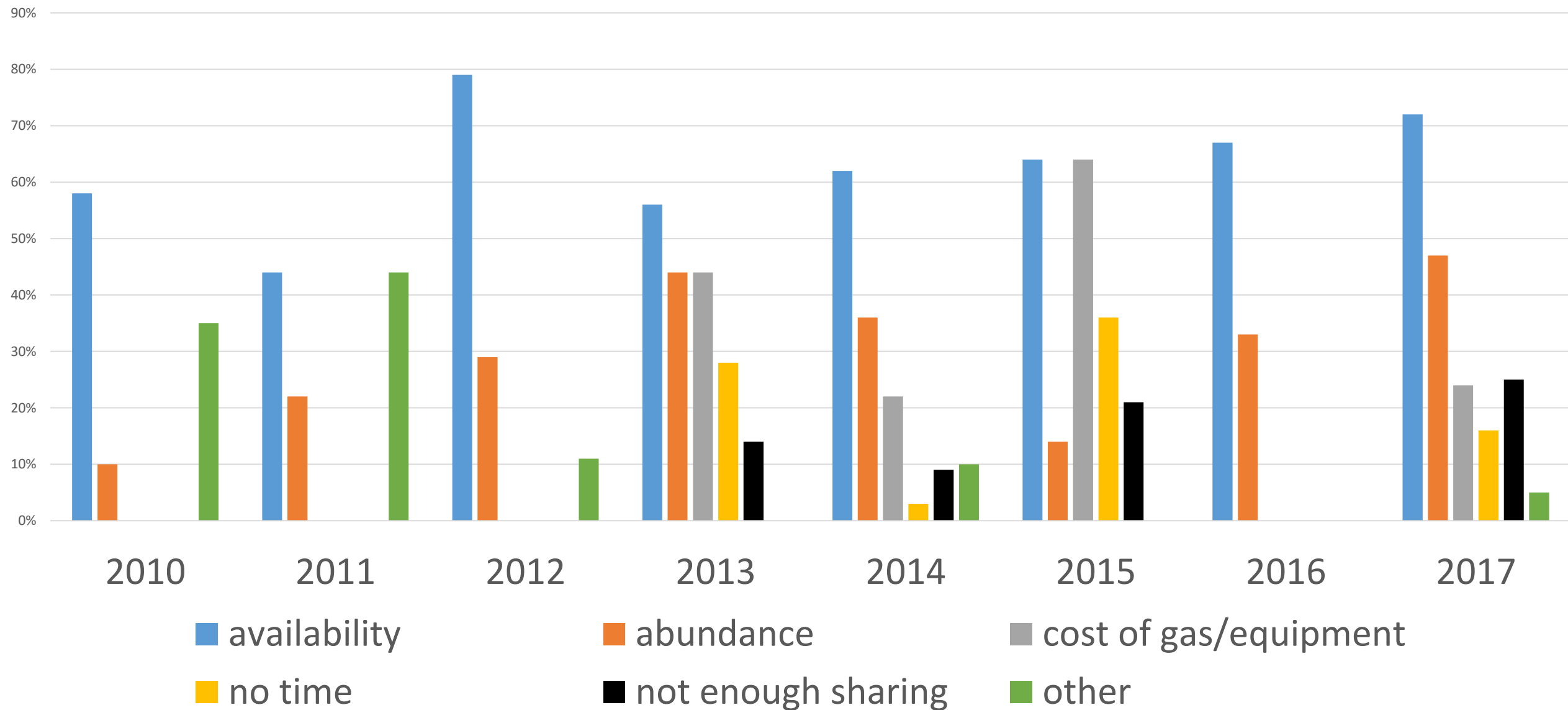
Meet Your Caribou Needs (2010-2017)



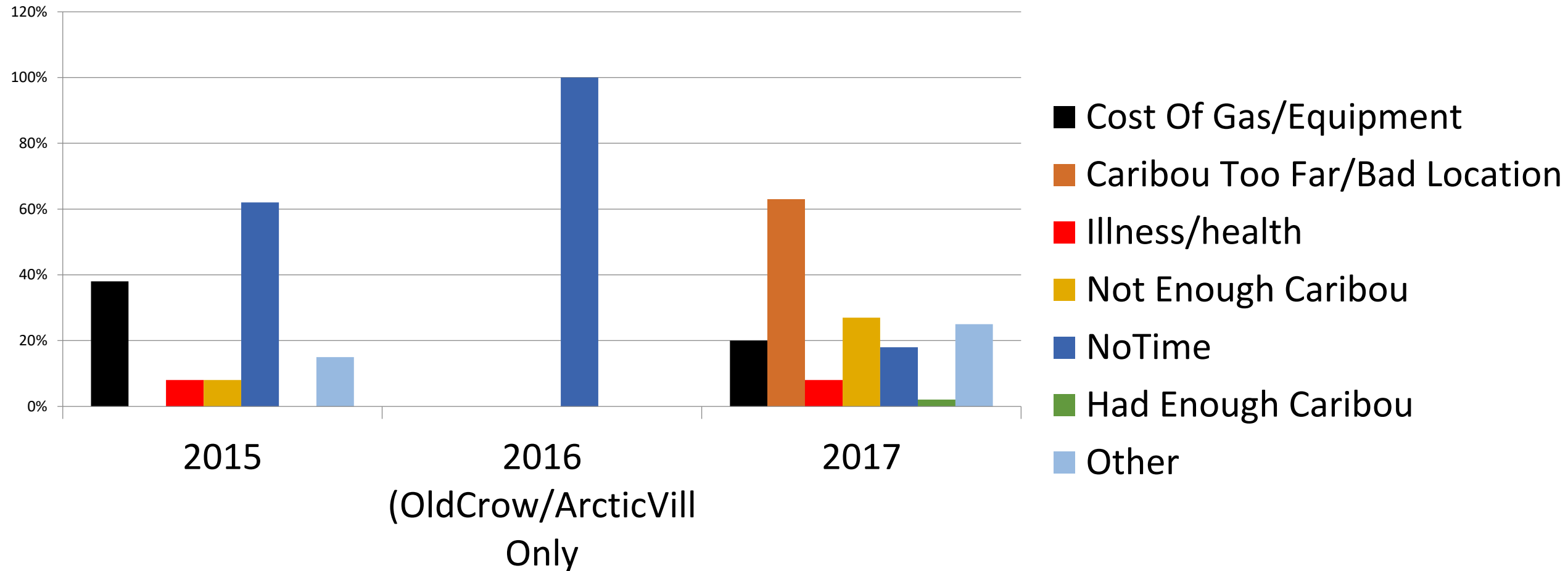
Winter range



What prevented you from meeting caribou needs?



Main reasons caribou not hunted



42% (58) of interviewees who answered the question, “Did you hunt caribou this year” said no
89 people said they did harvest some caribou
34% said they met their needs

Body Condition

ABEKS asks questions about”

- Overall body condition
- Size
- Physical abnormalities

CARIBOU CHARACTERISTICS

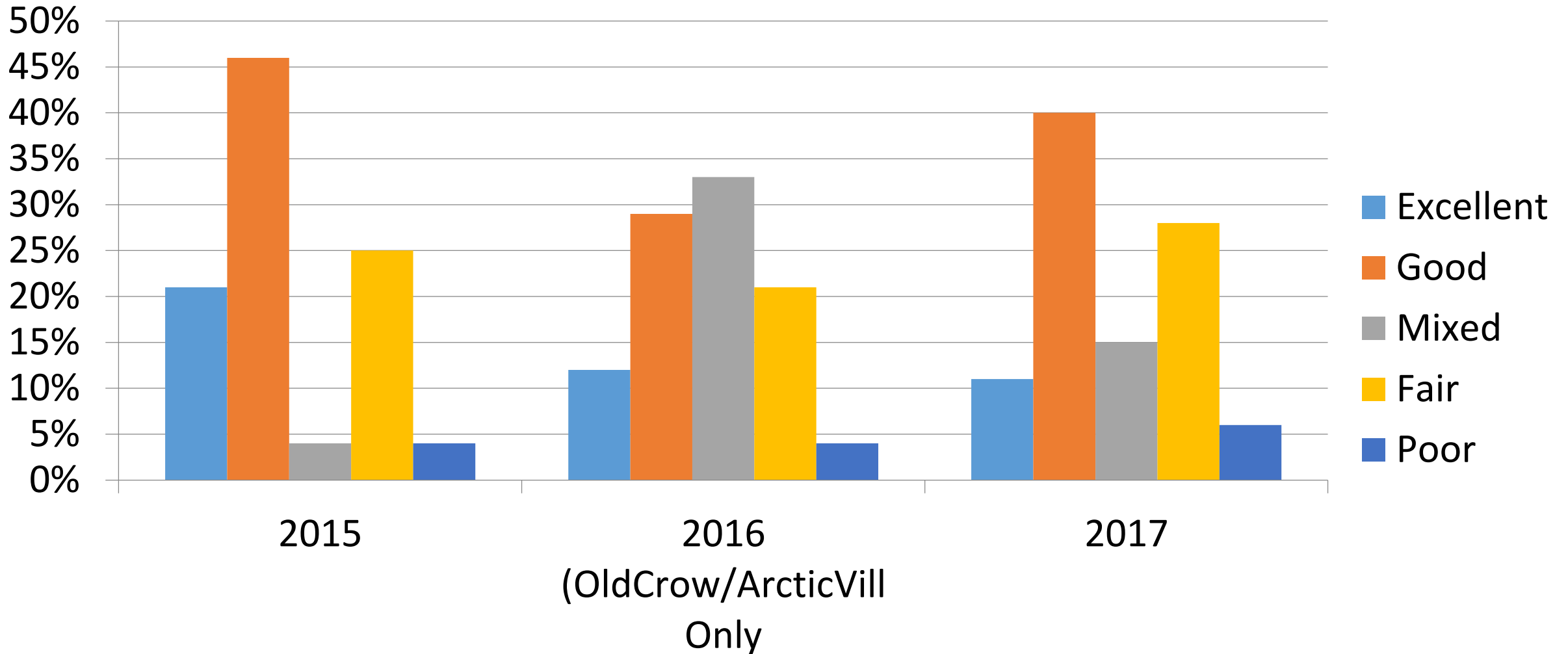
F4. The following questions are about body condition and health of caribou you observed in each season over the past year. Please check one or more that applies.

Overall Condition	Winter	Spring	Summer	Fall
Excellent (E)				
Good (G)				
Mixed (M)				
Fair (F)				
Poor (P)				
Don't know				

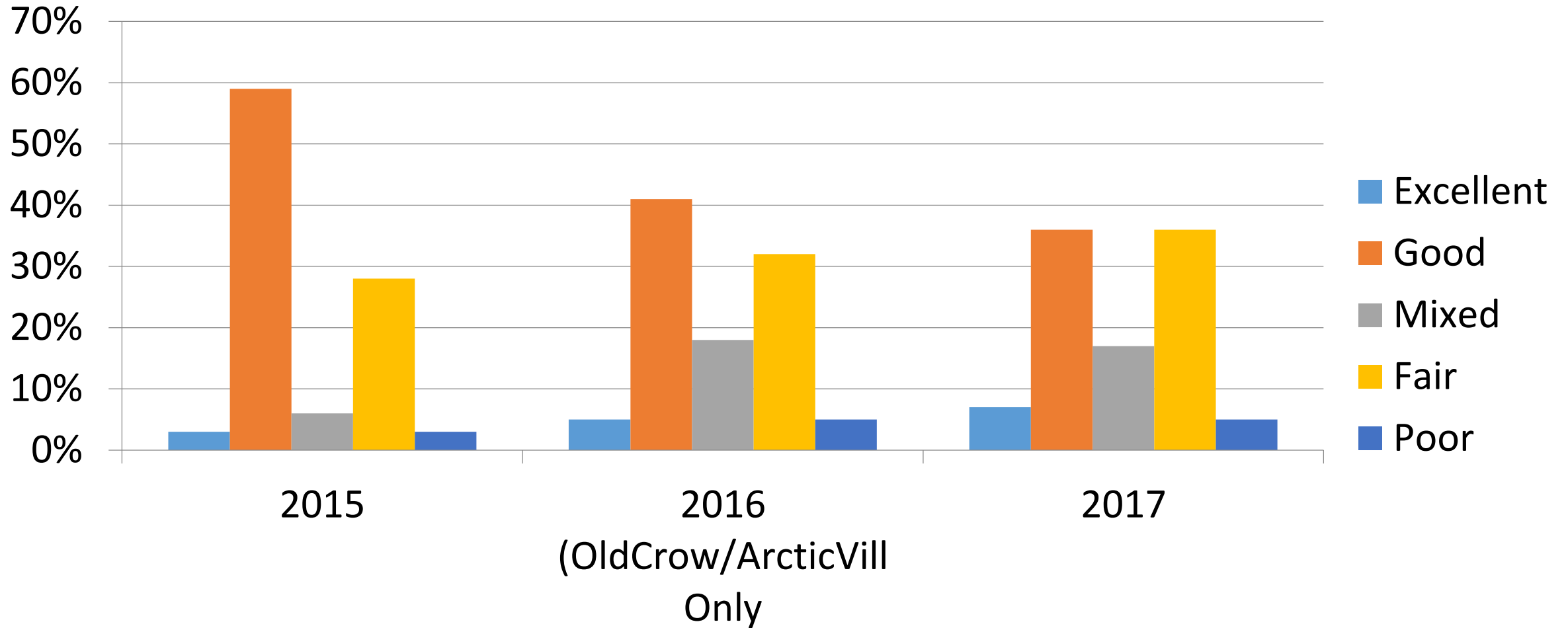
Size	Winter	Spring	Summer	Fall
Muscular/Fit/Strong				
Skinny/Lean				
Average				
Fat				
Don't know				

Physical Abnormalities	Winter	Spring	Summer	Fall
Cysts, white spots in meat				
Sores & puss				
Wounded/limping				
Swollen joints, testes or glands				
Bad liver				
None of these				
Don't know				

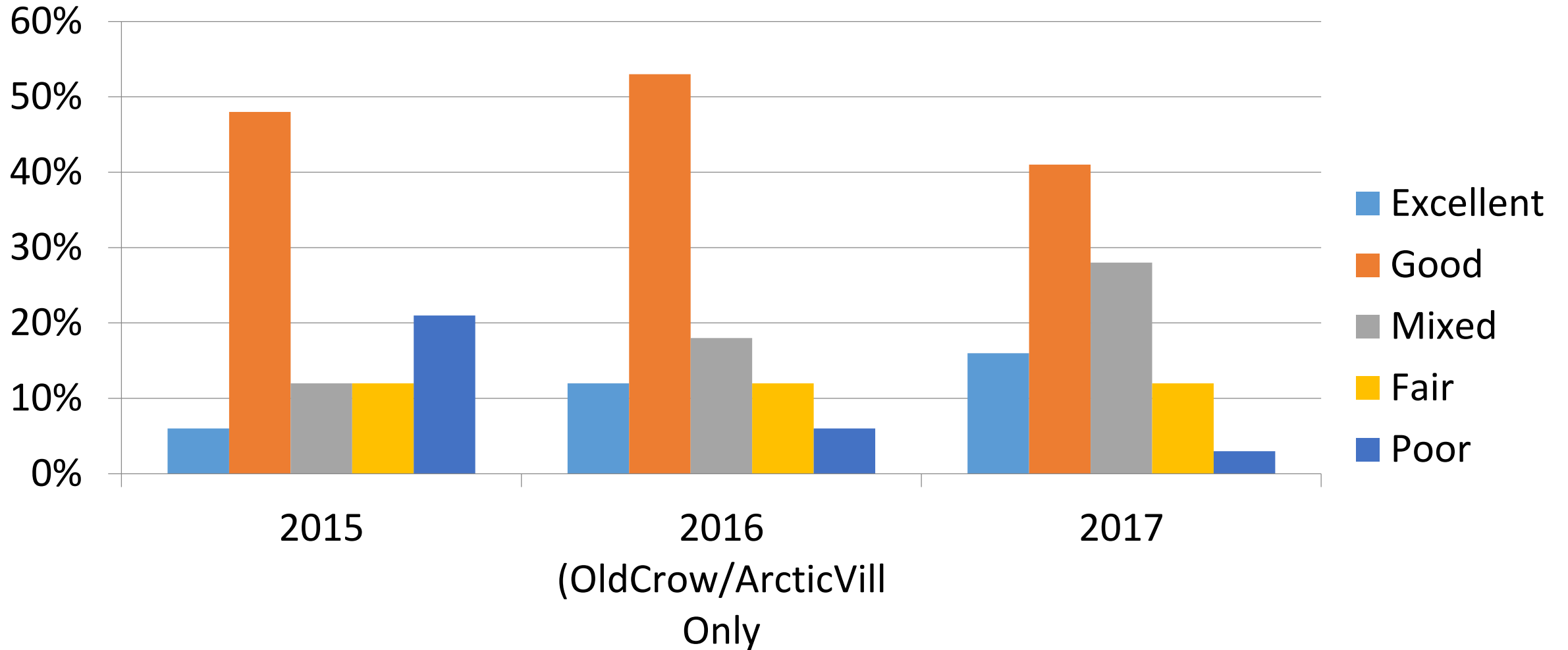
Winter overall body condition



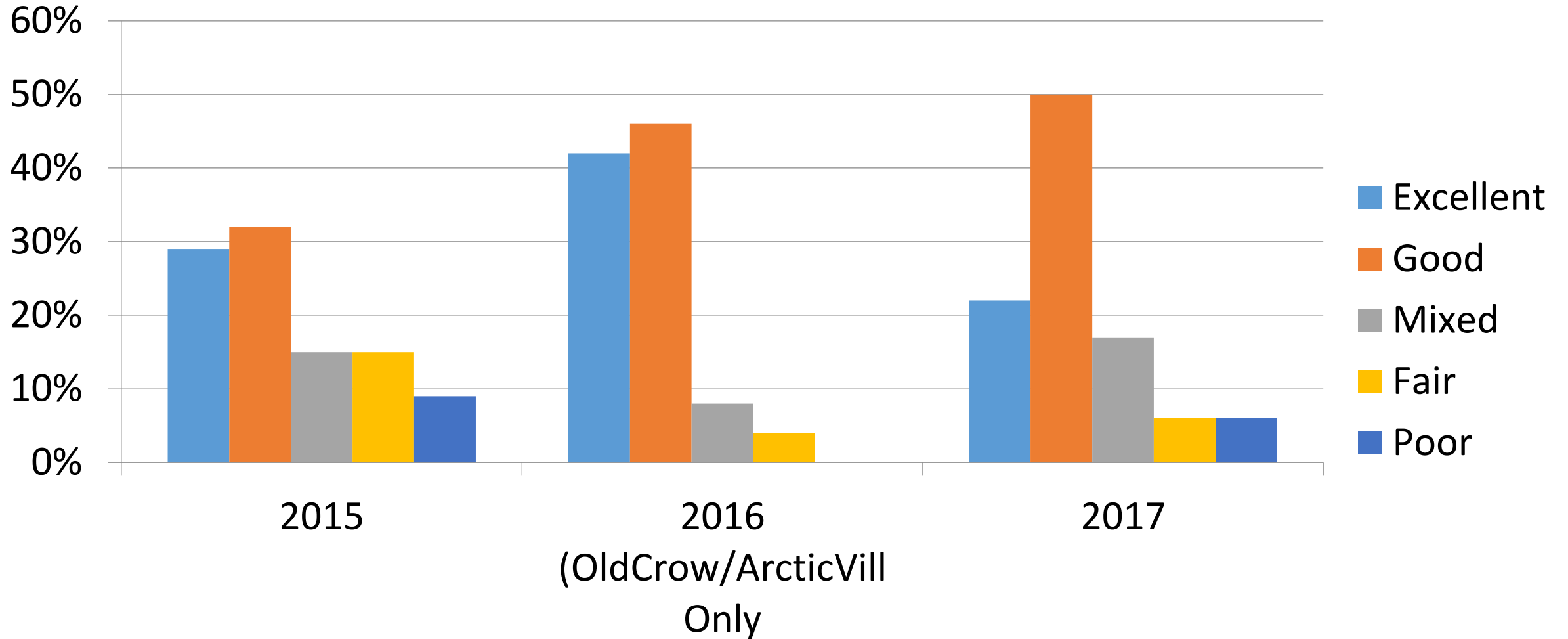
Spring overall body condition



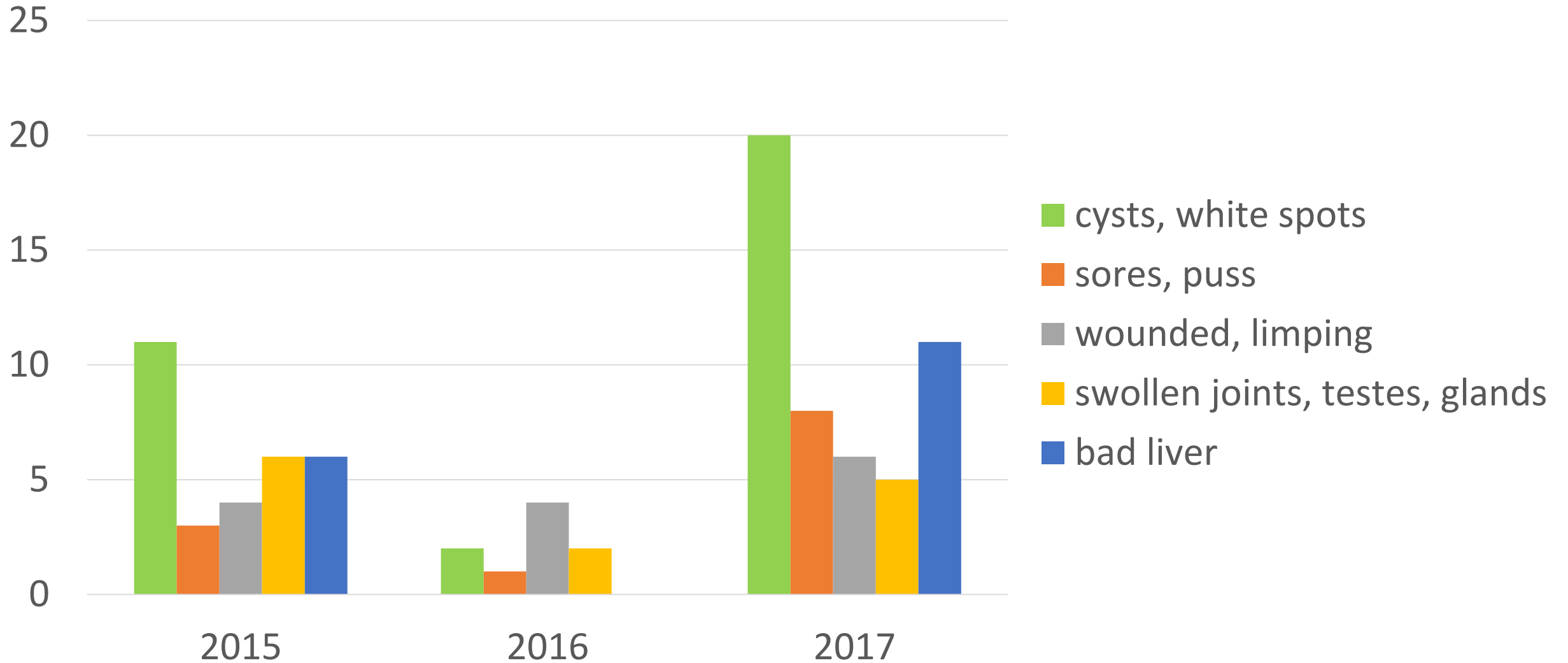
Summer overall body condition



Fall overall body condition



Abnormalities reported

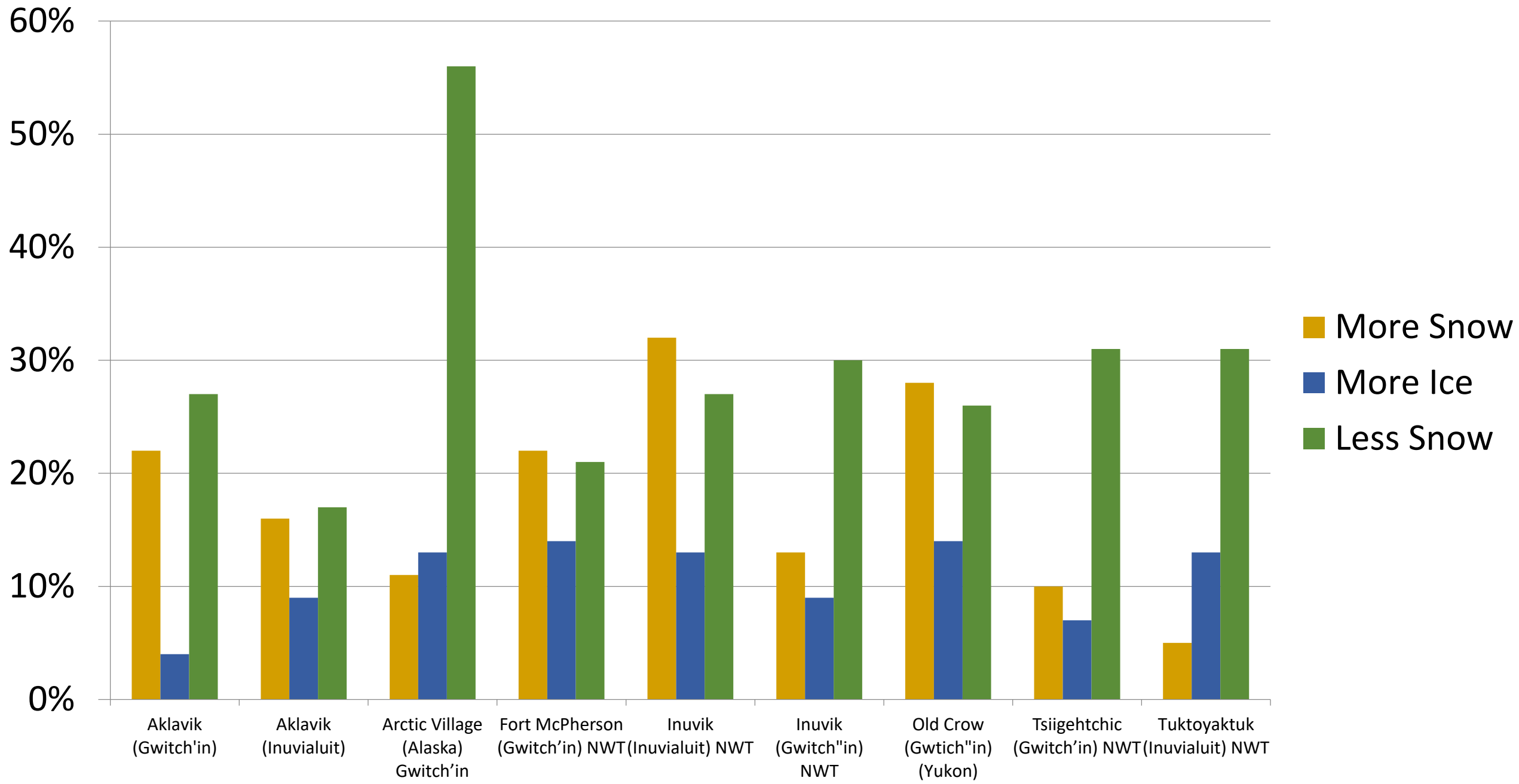


Extreme weather events

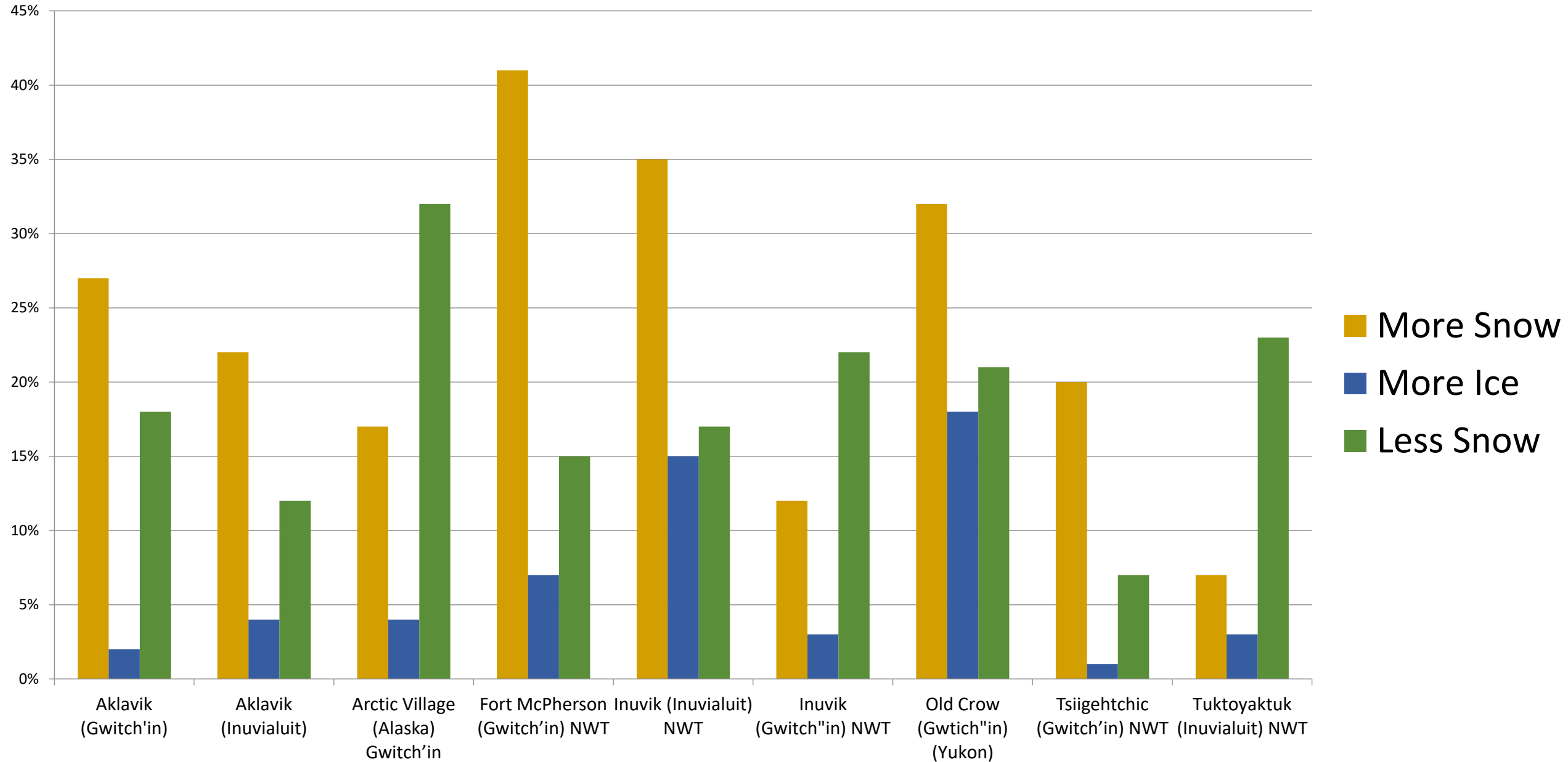
- Interviewees are asked to identify months when extreme or rare weather-related events were observed



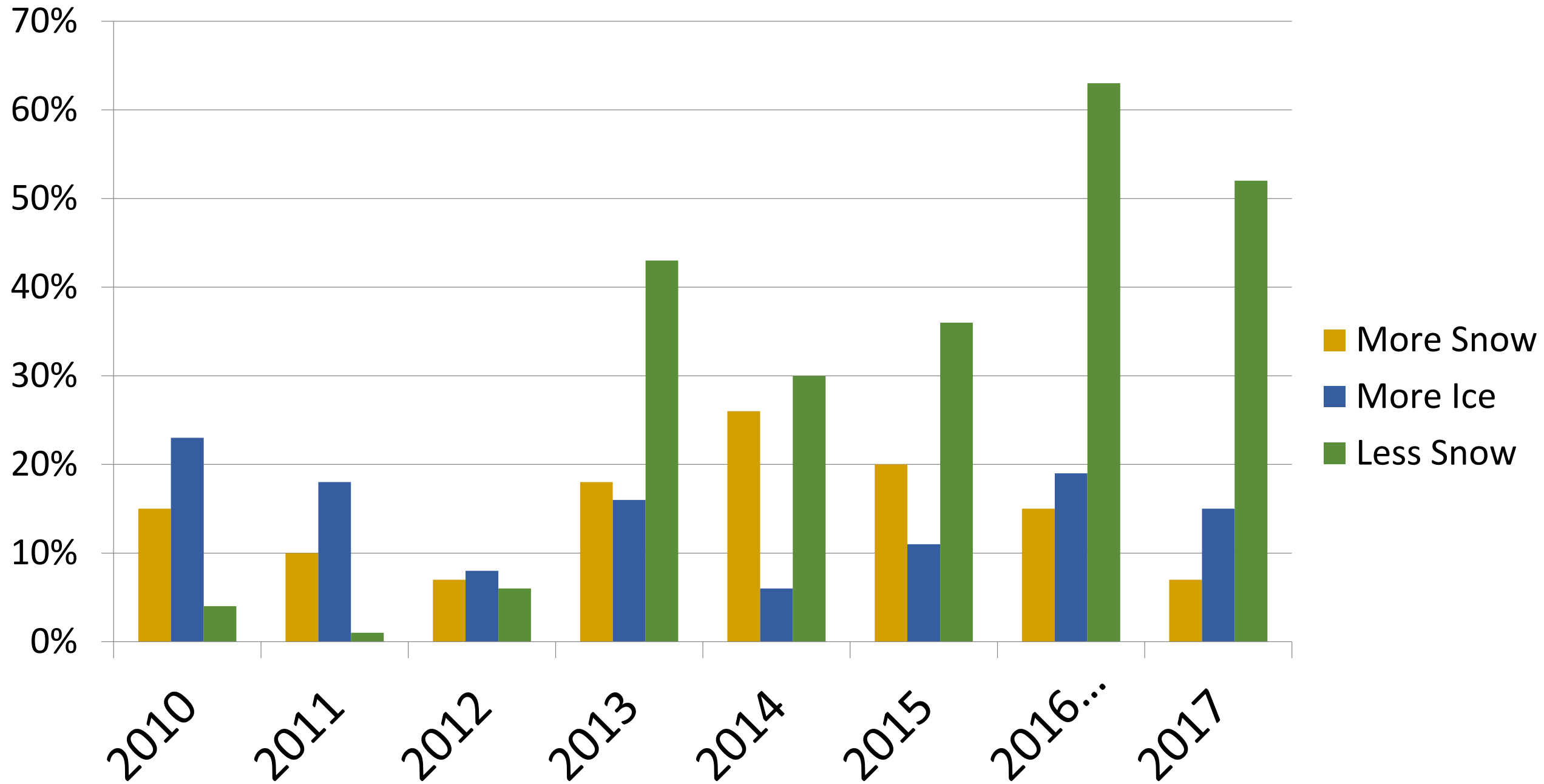
Extreme weather – early winter (Oct-Dec 2016)



Extreme weather – late winter (Jan-Mar 2017)



Extreme weather, all communities – early winter (Oct-Dec 2016)



Extreme weather, all communities – late winter (Jan-Mar 2017)

