

PCMB

Annual Harvest Meeting

Inuvik, NT, February 13th, 2024



Tr'ondëk Hwëch'in

FISH AND WILDLIFE BRANCH



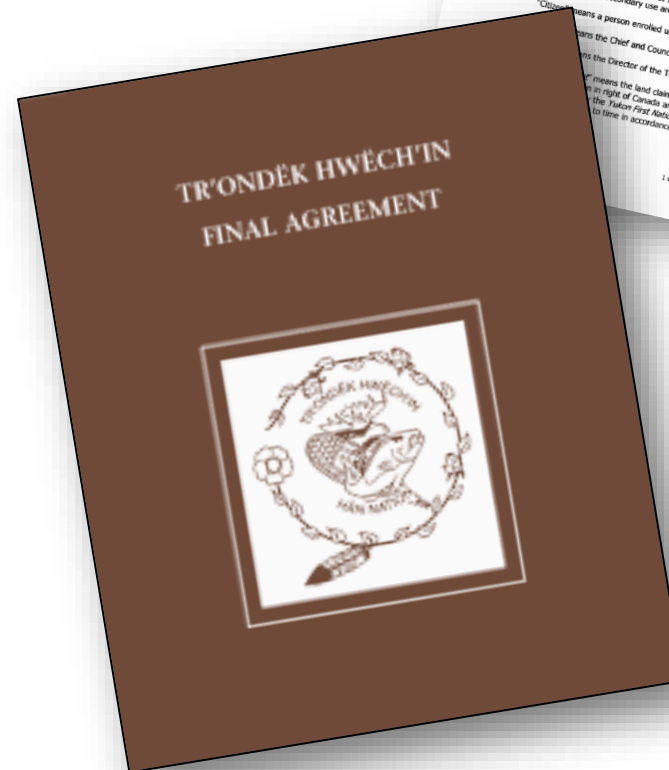
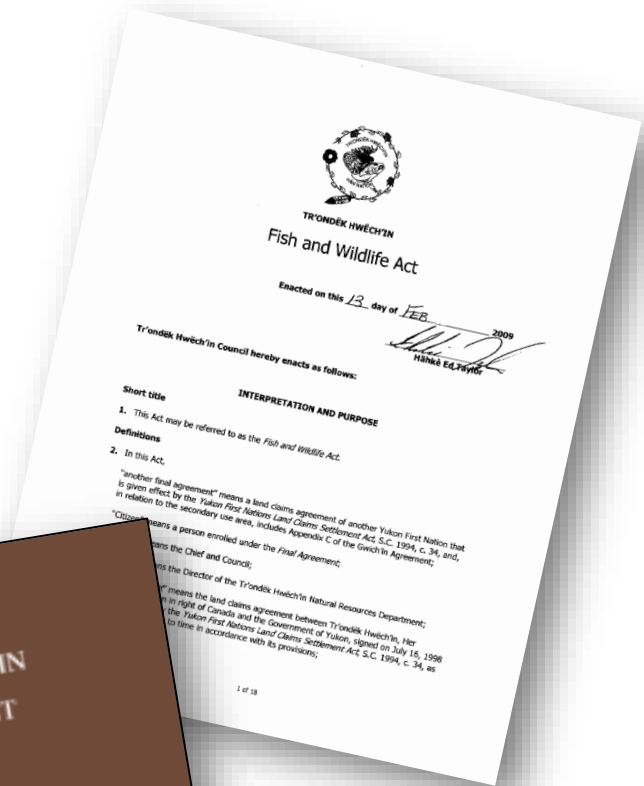
Topics

- I. Governance
- II. Nätäzrè | Harvest
- III. Nänkäk K'änächa | Stewardship
- IV. Maintaining a Connection with Wëdzey



Governance

- TH signed Self-Governing & Final Agreements in 1998 thus creating the TH Government
- TH enacted a F&W Act in 2009 to regulate Citizens during times of conservation concern
- The F&W Branch is mandated and guided largely by *Chapter 16 Fish and Wildlife* of the TH FA
- This presentation will speak only to TH Citizen harvest numbers



Nätäzrè | Harvest Annual Harvest Survey

- TH F&W actively seeks harvest data information from Citizens through a variety of methods:
 - Mail-outs
 - Door-to-door surveys
 - Phone calls
 - Word of mouth and follow-up
 - Citizen meetings
 - Wildlife Monitoring
 - TH Website
 - Social Media

TR'ONDÈK HWÈCH'IN HARVEST SURVEY
For the harvest year: April 1, 2021 - March 31, 2022
FILL OUT THIS SURVEY TO ENTER THE FISH & WILDLIFE PRIZE
Prizes to be drawn at 4 pm on April 4, 2022
1st Prize: Skimmer 2nd Prize: GSL Yeti cooler 3rd Prize: Bushnell rangefinder
PLUS! Each TH household to submit a completed survey will receive \$20 Mackenzie Petoleum gift certificate in recognition of your time and value. The information collected in this survey helps inform the TH Fish & Wildlife branch of changes in harvest NEEDS, and harvest EFFORT of TH Citizens so that we can better advocate for your subsistence.

MOOSE
Wildlife Species: Moose
HUNTING EFFORT: How much time did you spend searching? (check all that apply)
Where did you SEARCH? (check all that apply)
How much time did you SEARCH compared to last year?
HARVEST: Successful HARVEST? Household needs met? Who did you SHARE your harvest with?
OBSERVATIONS: Was the animal(s) HEALTHY? Any COMMENTS or OBSERVATIONS about your hunt?

CARIBOU
Wildlife Species: Caribou
HUNTING EFFORT: How much time did you spend searching? (check all that apply)
Where did you SEARCH? (check all that apply)
How much time did you SEARCH compared to last year?
HARVEST: Successful HARVEST? Household needs met? Who did you SHARE your harvest with?
OBSERVATIONS: Was the animal(s) HEALTHY? Any COMMENTS or OBSERVATIONS about your hunt?

SHEEP
Wildlife Species: Sheep
HUNTING EFFORT: How much time did you spend searching? (check all that apply)
Where did you SEARCH? (check all that apply)
How much time did you SEARCH compared to last year?
HARVEST: Successful HARVEST? Household needs met? Who did you SHARE your harvest with?
OBSERVATIONS: Was the animal(s) HEALTHY? Any COMMENTS or OBSERVATIONS about your hunt?

CHINOOK SALMON
Wildlife Species: Chinook Salmon
HUNTING EFFORT: What GEAR did you use? Where did you fish? (check all that apply)
How much time did you spend fishing compared to last year?
HARVEST: Successful HARVEST? Household needs met? Who did you SHARE your harvest with?
OBSERVATIONS: Were the fish HEALTHY? Population ABUNDANCE?

CHUM SALMON
Wildlife Species: Chum Salmon
HUNTING EFFORT: What GEAR did you use? Where did you fish? (check all that apply)
How much time did you spend fishing compared to last year?
HARVEST: Successful HARVEST? Household needs met? Who did you SHARE your harvest with?
OBSERVATIONS: Were the fish HEALTHY? Population ABUNDANCE?

GRAYLING
Wildlife Species: Grayling
HUNTING EFFORT: What GEAR did you use? Where did you fish? (check all that apply)
How much time did you spend fishing compared to last year?
HARVEST: Successful HARVEST? Household needs met? Who did you SHARE your harvest with?
OBSERVATIONS: Were the fish HEALTHY? Population ABUNDANCE?

CHAR/DOLLY WARDEN
Wildlife Species: Char/Dolly Warden
HUNTING EFFORT: What GEAR did you use? Where did you fish? (check all that apply)
How much time did you spend picking plants?
HARVEST: Successful HARVEST? Household needs met? Who did you SHARE your harvest with?
OBSERVATIONS: Were the plants HEALTHY? Any COMMENTS or OBSERVATIONS?

WHITESH/ CISCO
Wildlife Species: Whitesh/Cisco
HUNTING EFFORT: What GEAR did you use? Where did you fish? (check all that apply)
How much time did you spend picking plants?
HARVEST: Successful HARVEST? Household needs met? Who did you SHARE your harvest with?
OBSERVATIONS: Were the plants HEALTHY? Any COMMENTS or OBSERVATIONS?

MUSHROOMS
Wildlife Species: Mushrooms
HUNTING EFFORT: What GEAR did you use? Where did you fish? (check all that apply)
How much time did you spend picking plants?
HARVEST: Successful HARVEST? Household needs met? Who did you SHARE your harvest with?
OBSERVATIONS: Were the plants HEALTHY? Any COMMENTS or OBSERVATIONS?

SPRUCE TIPS
Wildlife Species: Spruce Tips
HUNTING EFFORT: What GEAR did you use? Where did you fish? (check all that apply)
How much time did you spend picking plants?
HARVEST: Successful HARVEST? Household needs met? Who did you SHARE your harvest with?
OBSERVATIONS: Were the plants HEALTHY? Any COMMENTS or OBSERVATIONS?

LABRADOR TEA
Wildlife Species: Labrador Tea
HUNTING EFFORT: What GEAR did you use? Where did you fish? (check all that apply)
How much time did you spend picking plants?
HARVEST: Successful HARVEST? Household needs met? Who did you SHARE your harvest with?
OBSERVATIONS: Were the plants HEALTHY? Any COMMENTS or OBSERVATIONS?

OTHER PLANTS
Wildlife Species: Other Plants
HUNTING EFFORT: What GEAR did you use? Where did you fish? (check all that apply)
How much time did you spend picking plants?
HARVEST: Successful HARVEST? Household needs met? Who did you SHARE your harvest with?
OBSERVATIONS: Were the plants HEALTHY? Any COMMENTS or OBSERVATIONS?

OTHER PLANTS
Wildlife Species: Other Plants
HUNTING EFFORT: What GEAR did you use? Where did you fish? (check all that apply)
How much time did you spend picking plants?
HARVEST: Successful HARVEST? Household needs met? Who did you SHARE your harvest with?
OBSERVATIONS: Were the plants HEALTHY? Any COMMENTS or OBSERVATIONS?

Completed surveys can be: Dropped off at the TH Fish & Wildlife office or main reception in the TH Admin Building on Front St. Mailed to: Box 599 Dawson, YT Y0B 100 Emailed to: alicia.mcculley@trondak.ca
*** Survey starts on the reverse side of this page ***
Tr'ondèk Hwèch'in Harvest Survey for April 1, 2021 - March 31, 2022





Harvest Dates June 1 st – May 31 st	Reported PCH Harvest
2012/ 13	1
2013/ 14	2
2014/ 15	6
2015/ 16	12
2016/ 17	0
2017/ 18	0
2018/ 19	1*
2019/ 20	3
2020/ 21	0
2021/ 22	0
2022/ 23	0

Nätäzrè |
Harvest
Reported PCH
Harvest

Maintaining a Connection with Wédzey

Recent Activities

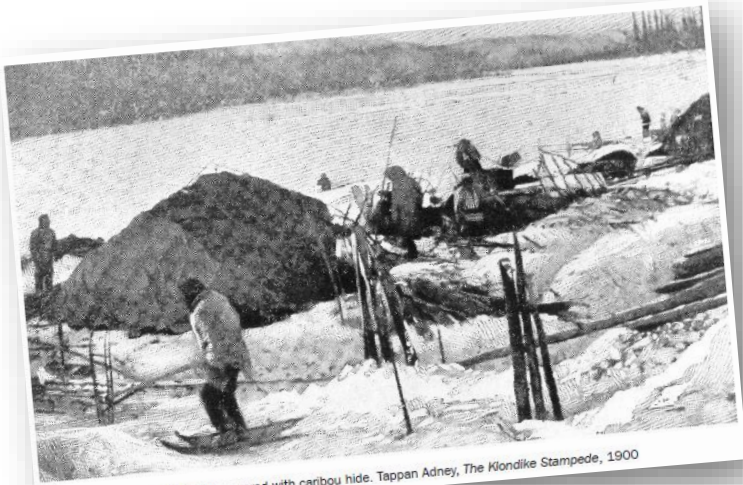
- Summary of Existing TK for Wédzey Conservation in the TH TT – 2021
- Partnership with University of Alberta & Yukon University – 2021
- Attendance in North American Caribou Workshop – 2023
- Field dressing, butchering, processing through *Land Guardian Certificate* in partnership with Yukon University – 2023/ 24
- Hosted Drin Wédzey in Dawson – Feb 2024

Ongoing Activities

- PCMB membership & participation in AHM and PCH Knowledge Hub
- Annual First Hunt Camp
- Responds to development assessment applications utilizing scientific & TK
- Storytelling



Maintaining a Connection with Wëdzey Storytelling



Dome shelter covered with caribou hide. Tappan Adney, *The Klondike Stampede*, 1900



Caribou skin dress.
Royal Ontario Museum, D.A. Cameron Coll.



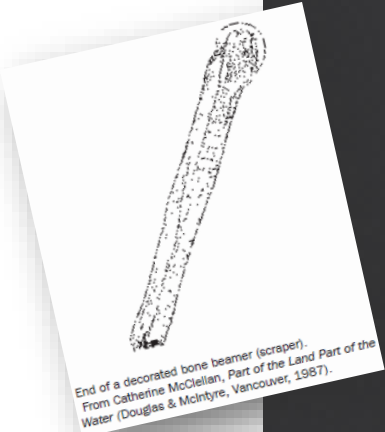
Babiche Bag.
Royal Ontario Museum, D.A. Cameron Coll.



Caribou skin parka.
Royal Ontario Museum, D.A. Cameron Coll.



"Interior of Indian Skin-house." From Tappan Adney, *The Klondike Stampede*, 1900.

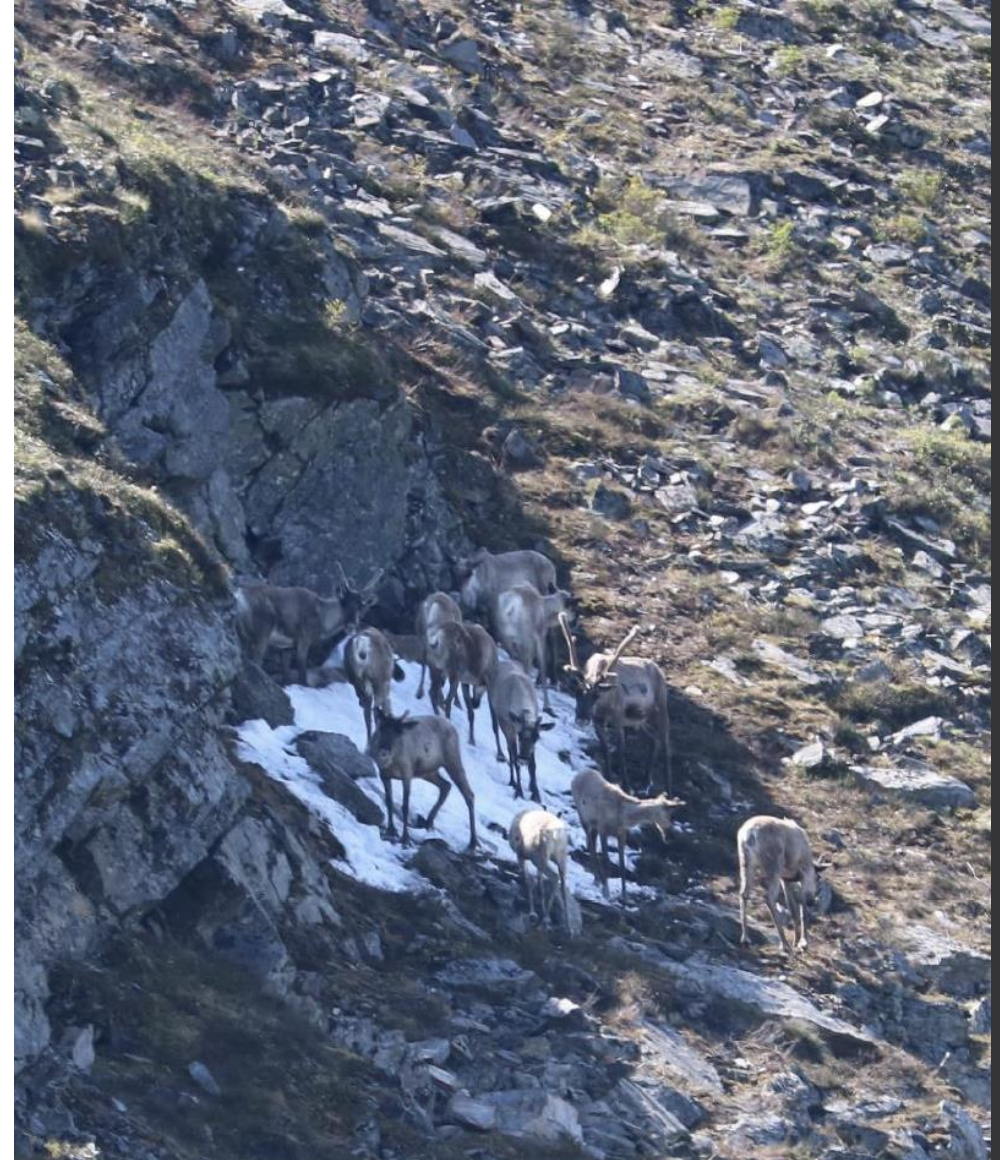


End of a decorated bone beamer (scraper).
From Catherine McClellan, *Part of the Land Part of the Water* (Douglas & McIntyre, Vancouver, 1987).



Climate Refugia: How can we help Wédzey adapt to climate change?

- Identify main climate-related drivers for Wédzey
- Find **refugia**: areas buffered from regional change where habitat doesn't change as quickly
- Protect refugia so Wédzey has space and time to adapt



Our Approach

- Community-based research
 - Dënezhu values
 - Hän art, language & stories
 - Youth
- Knowledge review
 - 30+ IK interview transcripts
 - 100+ research papers
- Refugia mapping and conservation planning



Wiedrzej



Short film
preview



Mähsi cho
Thank you

